

ATG3 Antibody



PACO25108

Product Information

Size:

50ug

Reactivity:

Human

Source:

Rabbit

Isotype:

IgG

Applications:

ELISA, WB, IHC, IF

Recommended dilutions:

ELISA:1:2000-1:10000, WB:1:500-1:5000,
IHC:1:1000-1:2000, IF:1:200-1:500

Protein Background:

Gene ID:

ATG3

Uniprot

Q9NT62

Synonyms:

Ubiquitin-like-conjugating enzyme ATG3 (EC 2.3.2. -) (Autophagy-related protein 3) (APG3-like) (hApg3) (Protein PC3-96), ATG3, APG3 APG3L

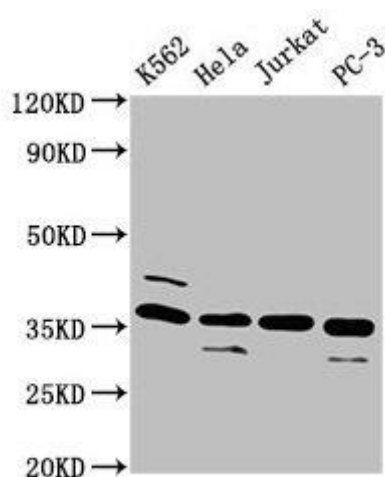
Immunogen:

Recombinant Human Ubiquitin-like-conjugating enzyme ATG3 protein (1-314AA).

Storage:

Preservative: 0.03% Proclin 300. Constituents: 50% Glycerol, 0.01M PBS, PH 7.4

Product Images



Western Blot

Positive WB detected in: K562 whole cell lysate, HeLa whole cell lysate, Jurkat whole cell lysate, PC-3 whole cell lysate

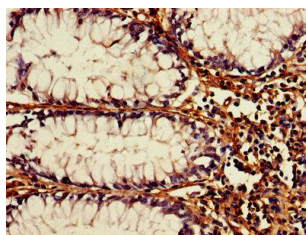
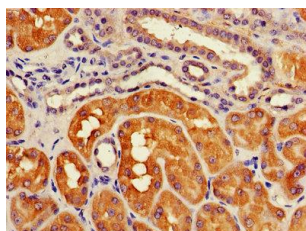
All lanes: ATG3 antibody at 4 μ g/ml

Secondary

Goat polyclonal to rabbit IgG at 1/50000 dilution

Predicted band size: 36 kDa

Observed band size: 36 kDa



IHC image of PACO25108 diluted at 1:1200 and staining in paraffin-embedded human kidney tissue performed on a Leica BondTM system. After dewaxing and hydration, antigen retrieval was mediated by high pressure in a citrate buffer (pH 6.0). Section was blocked with 10% normal goat serum 30min at RT. Then primary antibody (1% BSA) was incubated at 4 $^{\circ}$ C overnight. The primary is detected by a biotinylated secondary antibody and visualized using an HRP conjugated SP system.

IHC image of PACO25108 diluted at 1:1200 and staining in paraffin-embedded human colon cancer tissue performed on a Leica BondTM system. After dewaxing and hydration, antigen retrieval was mediated by high pressure in a citrate buffer (pH 6.0). Section was blocked with 10% normal goat serum 30min at RT. Then primary antibody (1% BSA) was incubated at 4 $^{\circ}$ C overnight. The primary is detected by a biotinylated secondary antibody and visualized using an HRP conjugated SP system.