

Atoh1 Antibody



PACO25120

Product Information

Size:

50ug

Reactivity:

Mouse

Source:

Rabbit

Isotype:

IgG

Applications:

ELISA, WB

Recommended dilutions:

ELISA:1:2000-1:10000, WB:1:500-1:5000

Protein Background:

Transcriptional regulator. Activates E box-dependent transcription in collaboration with TCF3/E47, but the activity is completely antagonized by the negative regulator of neurogenesis HES1. Plays a role in the differentiation of subsets of neural cells by activating E box-dependent transcription.

Gene ID:

Atoh1

Uniprot

P48985

Synonyms:

Protein atonal homolog 1 (Helix-loop-helix protein mATH-1) (mATH1), Atoh1, Ath1

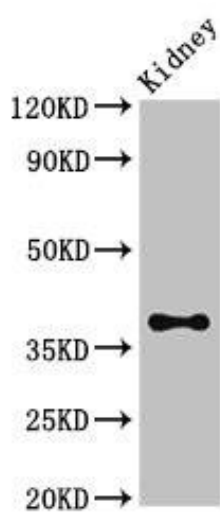
Immunogen:

Recombinant Mouse Protein atonal homolog 1 protein (1-351AA).

Storage:

Preservative: 0.03% Proclin 300. Constituents: 50% Glycerol, 0.01M PBS, PH 7.4

Product Images



Western Blot

Positive WB detected in: Mouse kidney tissue

All lanes: Atoh1 antibody at 3.4 μ g/ml

Secondary

Goat polyclonal to rabbit IgG at 1/50000 dilution

Predicted band size: 38 kDa

Observed band size: 38 kDa