

# ATP12A Antibody



PACO25124

---

## Product Information

**Size:**

50ug

**Reactivity:**

Human

**Source:**

Rabbit

**Isotype:**

IgG

**Applications:**

ELISA, IHC, IF

**Recommended dilutions:**

ELISA:1:2000-1:10000, IHC:1:20-1:200,  
IF:1:50-1:200

**Protein Background:**

Catalyzes the hydrolysis of ATP coupled with the exchange of H(+) and K(+) ions across the plasma membrane. Responsible for potassium absorption in various tissues.

**Gene ID:**

ATP12A

**Uniprot**

P54707

**Synonyms:**

Potassium-transporting ATPase alpha chain 2 (EC 3.6.3.10) (Non-gastric H(+)/K(+) ATPase subunit alpha) (Proton pump), ATP12A, ATP1AL1

**Immunogen:**

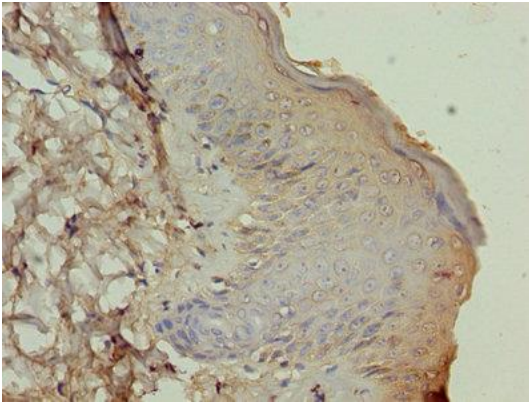
Recombinant Human Potassium-transporting ATPase &alpha; chain 2 protein (171-306AA).

**Storage:**

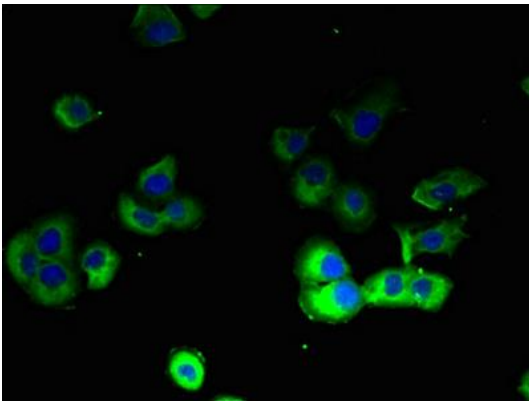
Preservative: 0.03% Proclin 300. Constituents: 50% Glycerol, 0.01M PBS, PH 7.4

## Product Images

---



Immunohistochemistry of paraffin-embedded human skin tissue using PACO25124 at dilution of 1:100.



Immunofluorescent analysis of A431 cells using PACO25124 at dilution of 1:100 and Alexa Fluor 488-conjugated AffiniPure Goat Anti-Rabbit IgG(H+L).