

Product Information

Size:

50ug

Reactivity:

Human

Source:

Rabbit

Isotype:

IgG

Applications:

ELISA, IHC, IF

Recommended dilutions:

ELISA:1:2000-1:10000, IHC:1:20-1:200,
IF:1:50-1:200

Protein Background:

Beta-1,3-galactosyltransferase that transfers galactose from UDP-galactose to substrates with a terminal beta-N-acetylglucosamine (beta-GlcNAc) residue. Can also utilize substrates with a terminal galactose residue, albeit with lower efficiency. Involved in the biosynthesis of the carbohydrate moieties of glycolipids and glycoproteins. Inactive towards substrates with terminal alpha-N-acetylglucosamine (alpha-GlcNAc) or alpha-N-acetylgalactosamine (alpha-GalNAc) residues.

Gene ID:

B3GALT2

Uniprot

O43825

Synonyms:

Beta-1,3-galactosyltransferase 2 (Beta-1,3-GalTase 2) (Beta3Gal-T2) (Beta3GalT2) (EC 2.4.1.86) (UDP-galactose:2-acetamido-2-deoxy-D-glucose 3beta-galactosyltransferase 2), B3GALT2

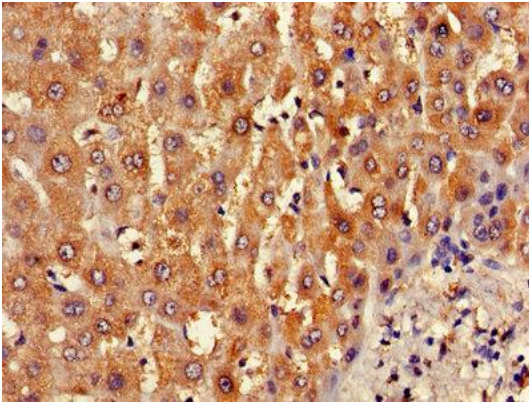
Immunogen:

Recombinant Human Beta-1,3-galactosyltransferase 2 protein (201-422AA).

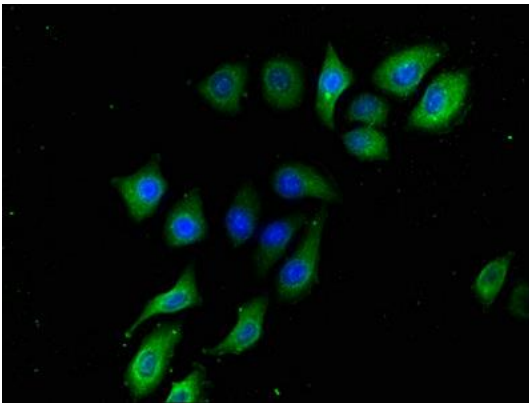
Storage:

Preservative: 0.03% Proclin 300. Constituents: 50% Glycerol, 0.01M PBS, PH 7.4

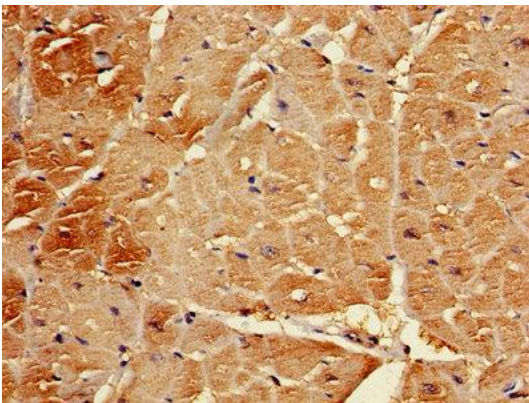
Product Images



Immunohistochemistry of paraffin-embedded human liver tissue using PACO25184 at dilution of 1:100.



Immunofluorescence staining of A549 cells with PACO25184 at 1:133, counter-stained with DAPI. The cells were fixed in 4% formaldehyde, permeabilized using 0.2% Triton X-100 and blocked in 10% normal Goat Serum. The cells were then incubated with the antibody overnight at 4°C. The secondary antibody was Alexa Fluor 488-conjugated AffiniPure Goat Anti-Rabbit IgG(H+L).



Immunohistochemistry of paraffin-embedded human heart tissue using PACO25184 at dilution of 1:100.