

# SMCO3 Antibody



PACO25312

---

## Product Information

**Size:**

50ug

**Reactivity:**

Human

**Source:**

Rabbit

**Isotype:**

IgG

**Applications:**

ELISA, IF

**Recommended dilutions:**

ELISA:1:2000-1:10000, IF:1:50-1:200

**Protein Background:**

**Gene ID:**

SMCO3

**Uniprot**

A2RU48

**Synonyms:**

Single-pass membrane and coiled-coil domain-containing protein 3, SMCO3, C12orf69

**Immunogen:**

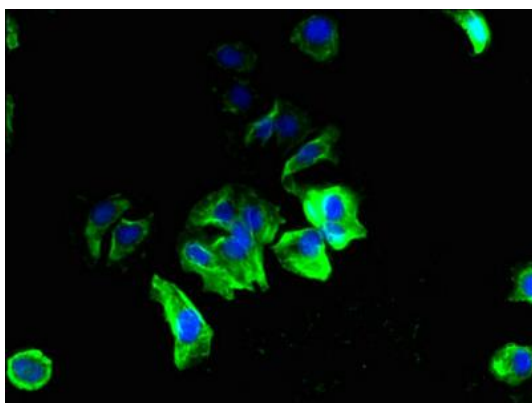
Recombinant Human Single-pass membrane and coiled-coil domain-containing protein 3 protein (1-154AA).

**Storage:**

Preservative: 0.03% Proclin 300. Constituents: 50% Glycerol, 0.01M PBS, PH 7.4

## Product Images

---



Immunofluorescent analysis of MCF-7 cells using PACO25312 at dilution of 1:100 and Alexa Fluor 488-conjugated AffiniPure Goat Anti-Rabbit IgG(H+L).