

CPED1 Antibody



PACO25408

Product Information

Size:

50ug

Reactivity:

Human

Source:

Rabbit

Isotype:

IgG

Applications:

ELISA, IHC

Recommended dilutions:

ELISA:1:2000-1:10000, IHC:1:20-1:200

Protein Background:

endoplasmic reticulum.

Gene ID:

CPED1

Uniprot

A4D0V7

Synonyms:

Cadherin-like and PC-esterase domain-containing protein 1, CPED1, C7orf58

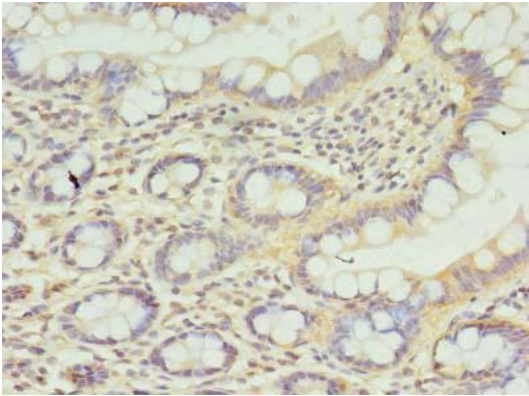
Immunogen:

Recombinant Human Cadherin-like and PC-esterase domain-containing protein 1 protein (221-472AA).

Storage:

Preservative: 0.03% Proclin 300. Constituents: 50% Glycerol, 0.01M PBS, PH 7.4

Product Images



Immunohistochemistry of paraffin-embedded human small intestine tissue using PACO25408 at dilution of 1:100.