

# SERPINB14 Antibody



PACO25420

---

## Product Information

**Size:**

50ug

**Reactivity:**

Chicken

**Source:**

Rabbit

**Isotype:**

IgG

**Applications:**

ELISA, WB

**Recommended dilutions:**

ELISA:1:2000-1:10000, WB:1:1000-1:5000

**Protein Background:**

Non-inhibitory serpin. Storage protein of egg white.

**Gene ID:**

SERPINB14

**Uniprot**

P01012

**Synonyms:**

Ovalbumin (Allergen Gal d II) (Egg albumin) (Plakalbumin) (allergen Gal d 2), SERPINB14

**Immunogen:**

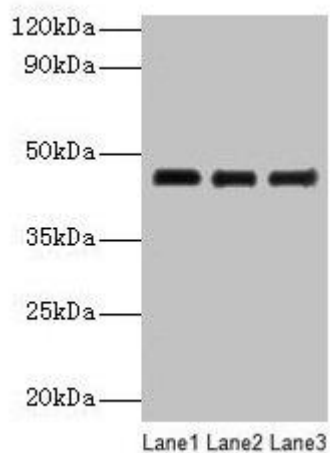
Chicken Ovalbumin (Native Protein).

**Storage:**

Preservative: 0.03% Proclin 300. Constituents: 50% Glycerol, 0.01M PBS, PH 7.4

## Product Images

---



### Western blot

All lanes: SERPINB14 antibody at 2 $\mu$ g/ml

Lane 1: Ovalbumin at 1: 4000

Lane 2: Ovalbumin at 1: 8000

Lane 3: Ovalbumin at 1: 16000

Secondary

Goat polyclonal to rabbit IgG at 1/10000 dilution

Predicted band size: 46 kDa

Observed band size: 46 kDa