

# Ca1 Antibody



PACO25432

---

## Product Information

**Size:**

50ug

**Reactivity:**

Rat

**Source:**

Rabbit

**Isotype:**

IgG

**Applications:**

ELISA, WB

**Recommended dilutions:**

ELISA:1:2000-1:10000, WB:1:1000-1:5000

**Protein Background:**

Reversible hydration of carbon dioxide.

**Gene ID:**

Ca1

**Uniprot**

B0BNN3

**Synonyms:**

Carbonic anhydrase 1 (EC 4.2.1.1) (Carbonate dehydratase I) (Carbonic anhydrase I) (CA-I), Ca1, Car1

**Immunogen:**

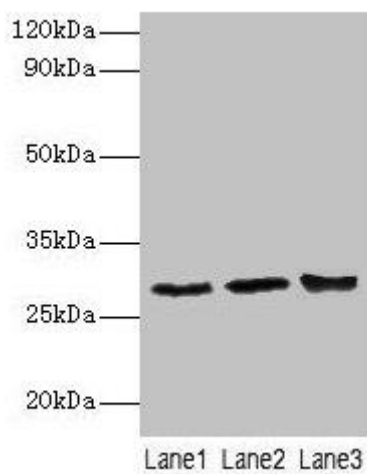
Recombinant Rat Carbonic anhydrase 1 protein (2-261AA).

**Storage:**

Preservative: 0.03% Proclin 300. Constituents: 50% Glycerol, 0.01M PBS, PH 7.4

## Product Images

---



### Western blot

All lanes: Ca1 antibody at 2 $\mu$ g/ml

Lane 1: Rat spleen tissue

Lane 2: Rat lung tissue

Lane 3: Rat kidney tissue

Secondary

Goat polyclonal to rabbit IgG at 1/10000 dilution

Predicted band size: 29 kDa

Observed band size: 29 kDa