

CA11 Antibody



PACO25436

Product Information

Size:

50ug

Reactivity:

Human

Source:

Rabbit

Isotype:

IgG

Applications:

ELISA, IHC

Recommended dilutions:

ELISA:1:2000-1:10000, IHC:1:20-1:200

Protein Background:

Does not have a catalytic activity.

Gene ID:

CA11

Uniprot

O75493

Synonyms:

Carbonic anhydrase-related protein 11 (CA-RP XI) (CA-XI) (CARP XI) (Carbonic anhydrase-related protein 2) (CA-RP II) (CARP-2), CA11, CARP2

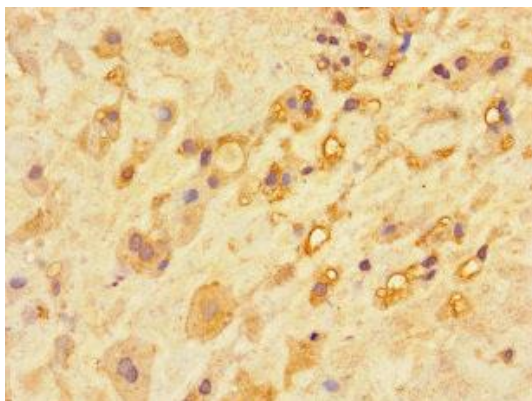
Immunogen:

Recombinant Human Carbonic anhydrase-related protein 11 protein (24-328AA).

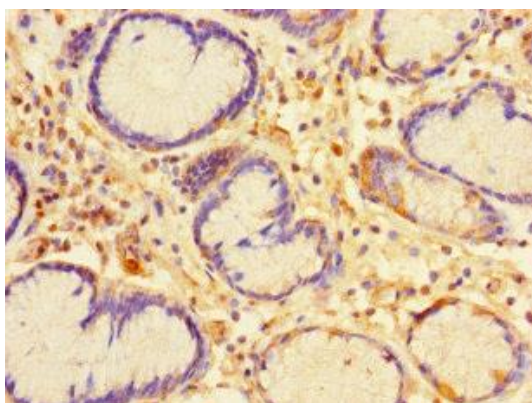
Storage:

Preservative: 0.03% Proclin 300. Constituents: 50% Glycerol, 0.01M PBS, PH 7.4

Product Images



Immunohistochemistry of paraffin-embedded human placenta tissue using PACO25436 at dilution of 1:100.



Immunohistochemistry of paraffin-embedded human stomach tissue using PACO25436 at dilution of 1:100.