

# Wheat Gliadin Antibody



PACO25484

---

## Product Information

**Size:**

50ug

**Reactivity:**

Plant

**Source:**

Rabbit

**Isotype:**

IgG

**Applications:**

ELISA, WB

**Recommended dilutions:**

ELISA:1:2000-1:10000, WB:1:1000-1:5000

**Protein Background:**

**Gene ID:**

**Uniprot**

**Synonyms:**

**Immunogen:**

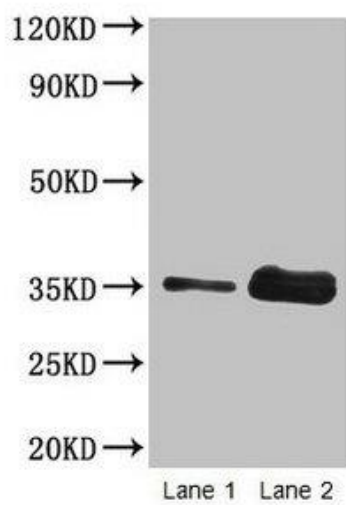
Wheat Gliadin (Native Protein).

**Storage:**

Preservative: 0.03% Proclin 300. Constituents: 50% Glycerol, 0.01M PBS, PH 7.4

## Product Images

---



Western blot

All lanes: Wheat Gliadin at 2 $\mu$ g/ml

Lane 1: Wheat flour at 2 $\mu$ g

Lane 2: Wheat flour at 10 $\mu$ g

Secondary

Goat polyclonal to rabbit IgG at 1/15000 dilution

Predicted band size: 35 kDa

Observed band size: 35 kDa