

Product Information

Size:

50ug

Reactivity:

Human

Source:

Rabbit

Isotype:

IgG

Applications:

ELISA, WB, IHC

Recommended dilutions:

ELISA:1:2000-1:10000, WB:1:500-1:2000,
IHC:1:20-1:200

Protein Background:

Catalyzes the condensation of nicotinamide with 5-phosphoribosyl-1-pyrophosphate to yield nicotinamide mononucleotide, an intermediate in the biosynthesis of NAD. It is the rate limiting component in the mammalian NAD biosynthesis pathway. The secreted form behaves both as a cytokine with immunomodulating properties and an adipokine with anti-diabetic properties, it has no enzymatic activity, partly because of lack of activation by ATP, which has a low level in extracellular space and plasma. Plays a role in the modulation of circadian clock function. NAMPT-dependent oscillatory production of NAD regulates oscillation of clock target gene expression by releasing the core clock component: CLOCK-ARNTL/BMAL1 heterodimer from NAD-dependent SIRT1-mediated suppression.

Gene ID:

CBX5

Uniprot

P45973

Synonyms:

Chromobox protein homolog 5 (Antigen p25) (Heterochromatin protein 1 homolog alpha) (HP1 alpha), CBX5, HP1A

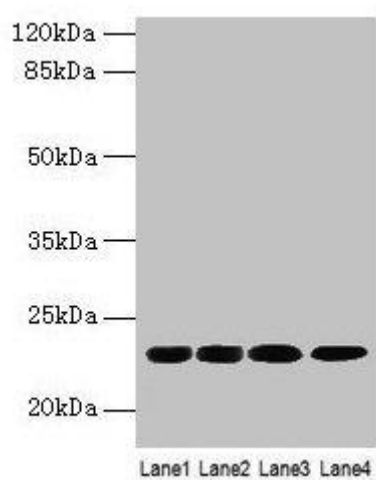
Immunogen:

Recombinant Human Chromobox protein homolog 5 protein (1-191AA).

Storage:

Preservative: 0.03% Proclin 300. Constituents: 50% Glycerol, 0.01M PBS, PH 7.4

Product Images



Western blot

All lanes: CBX5 antibody at 9 μ g/ml

Lane 1: K562 whole cell lysate

Lane 2: MCF-7 whole cell lysate

Lane 3: 293T whole cell lysate

Lane 4: Hela whole cell lysate

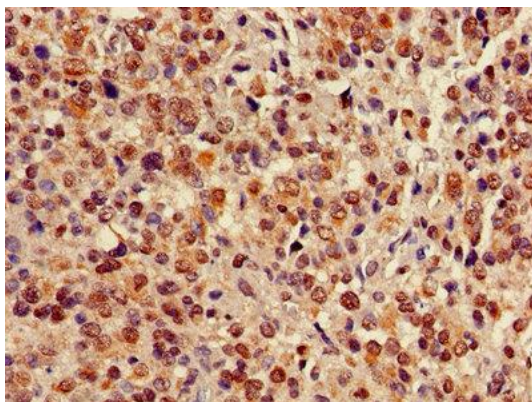
Secondary

Goat polyclonal to rabbit IgG at 1/10000 dilution

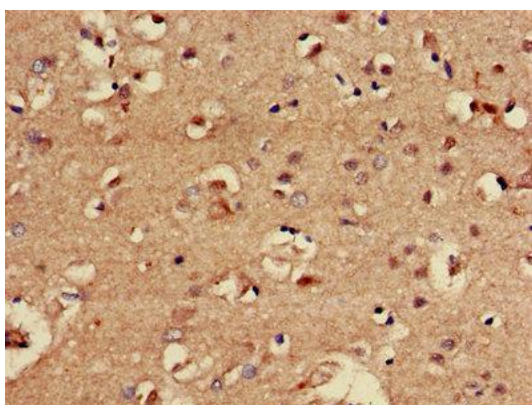
Predicted band size: 23 kDa

Observed band size: 23 kDa

.



Immunohistochemistry of paraffin-embedded human glioma using PACO25528 at dilution of 1:100.



Immunohistochemistry of paraffin-embedded human brain tissue using PACO25528 at dilution of 1:100.