

# Hemoglobin Antibody



PACO25552

---

## Product Information

**Size:**

50ug

**Reactivity:**

Guinea Pig

**Source:**

Rabbit

**Isotype:**

IgG

**Applications:**

ELISA, WB

**Recommended dilutions:**

ELISA:1:2000-1:10000, WB:1:1000-1:5000

**Protein Background:**

Involved in oxygen transport from the lung to the various peripheral tissues.

**Gene ID:**

**Uniprot**

**Synonyms:**

Hemoglobin

**Immunogen:**

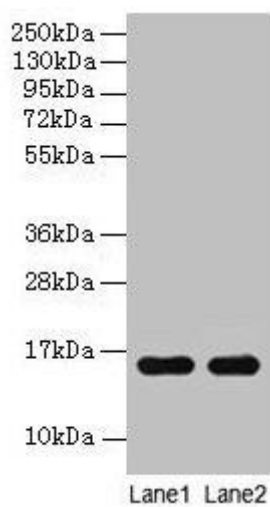
Guinea Pig Hemoglobin protein (Native Protein).

**Storage:**

Preservative: 0.03% Proclin 300. Constituents: 50% Glycerol, 0.01M PBS, PH 7.4

## Product Images

---



### Western blot

All lanes: Guinea Pig Hemoglobin antibody at 2 $\mu$ g/ml

Lane 1: Guinea Pig serum at 1: 100

Lane 2: Guinea Pig serum at 1: 1000

Secondary

Goat polyclonal to rabbit IgG at 1/15000 dilution

Predicted band size: 16 kDa

Observed band size: 16 kDa

.