

CCNJL Antibody



PACO25560

Product Information

Size:

50ug

Reactivity:

Human, Mouse

Source:

Rabbit

Isotype:

IgG

Applications:

ELISA, WB, IHC

Recommended dilutions:

ELISA:1:2000-1:10000, WB:1:500-1:2000,
IHC:1:20-1:200

Protein Background:

Gene ID:

CCNJL

Uniprot

Q8IV13

Synonyms:

Cyclin-J-like protein, CCNJL

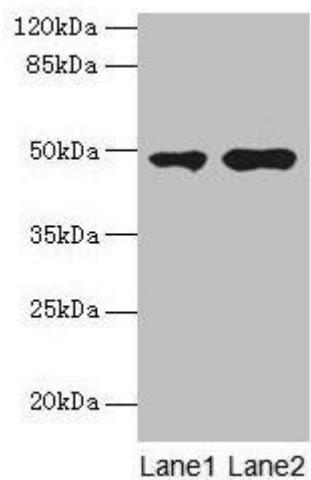
Immunogen:

Recombinant Human Cyclin-J-like protein (315-435AA).

Storage:

Preservative: 0.03% Proclin 300. Constituents: 50% Glycerol, 0.01M PBS, PH 7.4

Product Images



Western blot

All lanes: CCNJL antibody at 3 μ g/ml

Lane 1: U251 whole cell lysate

Lane 2: Mouse liver tissue

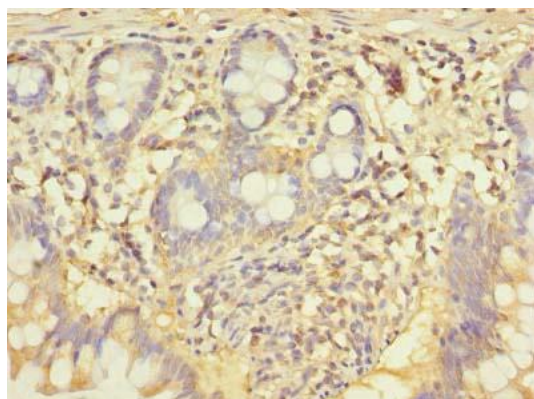
Secondary

Goat polyclonal to rabbit IgG at 1/10000 dilution

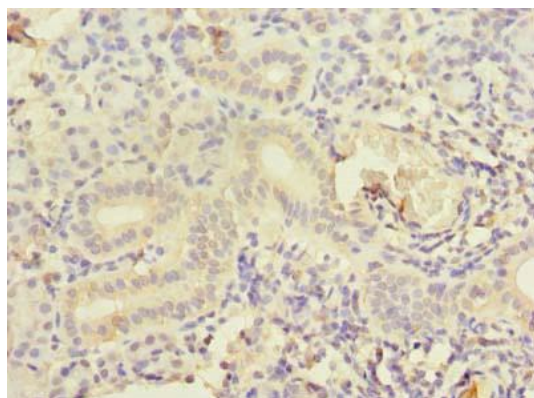
Predicted band size: 49, 19 kDa

Observed band size: 49 kDa

.



Immunohistochemistry of paraffin-embedded human small intestine tissue using PACO25560 at dilution of 1:100.



Immunohistochemistry of paraffin-embedded human pancreatic tissue using PACO25560 at dilution of 1:100.