

PACO25588

---

## Product Information

**Size:**

50ug

**Reactivity:**

Mouse

**Source:**

Rabbit

**Isotype:**

IgG

**Applications:**

ELISA, WB

**Recommended dilutions:**

ELISA:1:2000-1:10000, WB:1:1000-1:5000

**Protein Background:**

Hemoglobin is involved in oxygen transport from the lung to the various peripheral tissues. The alpha (HBA) and beta (HBB) loci determine the structure of the 2 types of polypeptide chains in adult Hemoglobin. The normal adult Hemoglobin tetramer consists of two alpha chains and two beta chains. Mutant beta globin causes sickle cell anemia. Absence of beta chain causes beta zero thalassemia. Reduced amounts of detectable beta globin causes beta plus thalassemia.

**Gene ID:****Uniprot****Synonyms:**

Hemoglobin

**Immunogen:**

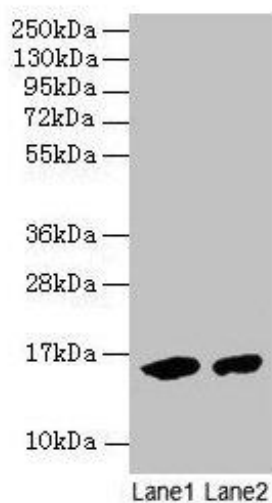
Mouse Hemoglobin protein (Native Protein).

**Storage:**

Preservative: 0.03% Proclin 300. Constituents: 50% Glycerol, 0.01M PBS, PH 7.4

## Product Images

---



### Western blot

All lanes: Mouse Hemoglobin antibody at 2 $\mu$ g/ml

Lane 1: Mouse serum at 1: 100

Lane 2: Mouse serum at 1: 1000

Secondary

Goat polyclonal to rabbit IgG at 1/15000 dilution

Predicted band size: 16 kDa

Observed band size: 16 kDa

.