

PACO25596

---

## Product Information

**Size:**

50ug

**Reactivity:**

Human, Mouse

**Source:**

Rabbit

**Isotype:**

IgG

**Applications:**

ELISA, WB, IHC

**Recommended dilutions:**

ELISA:1:2000-1:10000, WB:1:500-1:5000,  
IHC:1:20-1:200

**Protein Background:**

Acts as a cofactor for complement factor I, a serine protease which protects autologous cells against complement-mediated injury by cleaving C3b and C4b deposited on host tissue. May be involved in the fusion of the spermatozoa with the oocyte during fertilization. Also acts as a costimulatory factor for T-cells which induces the differentiation of CD4+ into T-regulatory 1 cells. T-regulatory 1 cells suppress immune responses by secreting interleukin-10, and therefore are thought to prevent autoimmunity. A number of viral and bacterial pathogens seem to exploit this property and directly induce an immunosuppressive phenotype in T-cells by binding to CD46.

**Gene ID:**

CD46

**Uniprot**

P15529

**Synonyms:**

Membrane cofactor protein (TLX) (Trophoblast leukocyte common antigen) (CD antigen CD46), CD46, MCP MIC10

**Immunogen:**

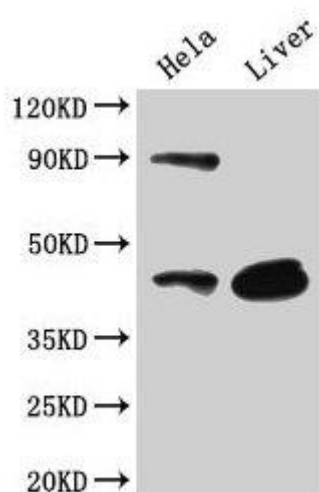
Recombinant Human Membrane cofactor protein (164-325AA).

**Storage:**

Preservative: 0.03% Proclin 300. Constituents: 50% Glycerol, 0.01M PBS, PH 7.4

## Product Images

---



### Western Blot

Positive WB detected in: HeLa whole cell lysate, Mouse liver tissue

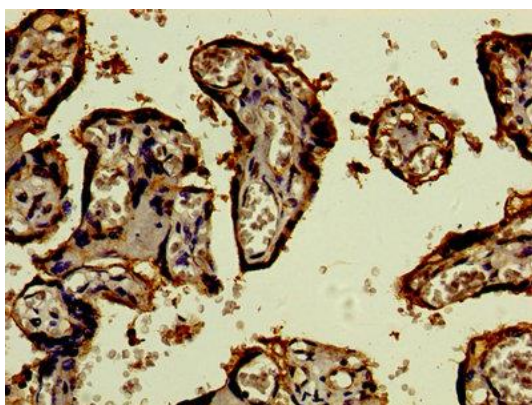
All lanes: CD46 antibody at 3 $\mu$ g/ml

Secondary

Goat polyclonal to rabbit IgG at 1/50000 dilution

Predicted band size: 44, 45, 43, 41, 42, 40, 37 kDa

Observed band size: 44 kDa



Immunohistochemistry of paraffin-embedded human placenta tissue using PACO25596 at dilution of 1:100.