

### Product Information

**Size:**

50ug

**Reactivity:**

Human, Mouse

**Source:**

Rabbit

**Isotype:**

IgG

**Applications:**

ELISA, WB, IHC, IF

**Recommended dilutions:**

ELISA:1:2000-1:10000, WB:1:1000-1:5000,  
IHC:1:20-1:200, IF:1:50-1:200

**Protein Background:**

Potent inhibitor of the complement membrane attack complex (MAC) action. Acts by binding to the C8 and/or C9 complements of the assembling MAC, thereby preventing incorporation of the multiple copies of C9 required for complete formation of the osmolytic pore. This inhibitor appears to be species-specific. Involved in signal transduction for T-cell activation complexed to a protein tyrosine kinase.

**Gene ID:**

CD59

**Uniprot**

P13987

**Synonyms:**

CD59 glycoprotein (1F5 antigen) (20 kDa homologous restriction factor) (HRF-20) (HRF20) (MAC-inhibitory protein) (MAC-IP) (MEM43 antigen) (Membrane attack complex inhibition factor) (MACIF) (Membrane inhibitor of reactive lysis) (MIRL) (Protectin) (CD antigen CD59), CD59, MIC11 MIN1 MIN2 MIN3 MSK21

**Immunogen:**

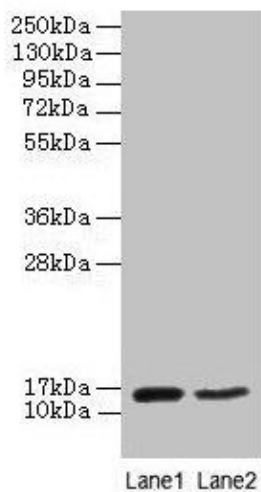
Recombinant Human CD59 glycoprotein protein (26-102AA).

**Storage:**

Preservative: 0.1mol/L NaCl, 15mmol/L NaN<sub>3</sub>, PH7.2

## Product Images

---



### Western blot

All lanes: CD59 antibody at 2 $\mu$ g/ml

Lane 1: Mouse heart tissue

Lane 2: NIH/3T3 whole cell lysate

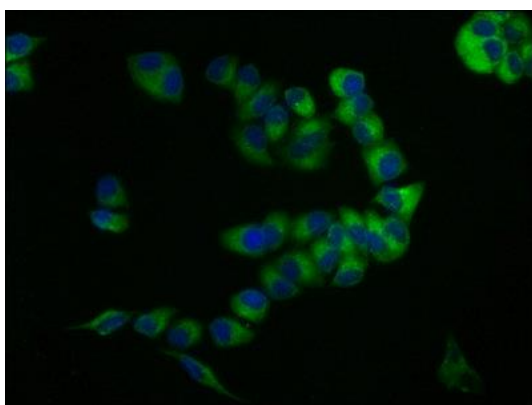
Secondary

Goat polyclonal to rabbit IgG at 1/10000 dilution

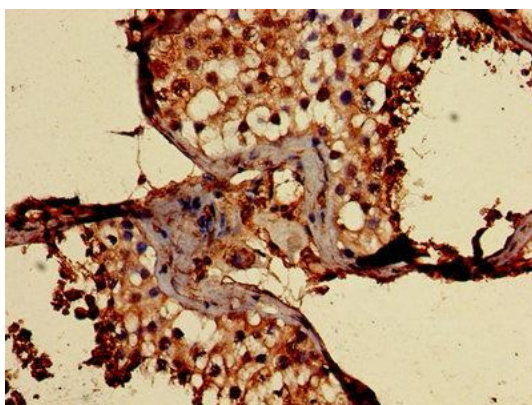
Predicted band size: 15 kDa

Observed band size: 15 kDa

.



Immunofluorescence staining of PC-3 cells with PACO25608 at 1:133, counter-stained with DAPI. The cells were fixed in 4% formaldehyde, permeabilized using 0.2% Triton X-100 and blocked in 10% normal Goat Serum. The cells were then incubated with the antibody overnight at 4°C. The secondary antibody was Alexa Fluor 488-conjugated AffiniPure Goat Anti-Rabbit IgG(H+L).



Immunohistochemistry of paraffin-embedded human testis tissue using PACO25608 at dilution of 1:100.