

PACO25652

Product Information

Size:

50ug

Reactivity:

Human

Source:

Rabbit

Isotype:

IgG

Applications:

ELISA, IHC

Recommended dilutions:

ELISA:1:2000-1:10000, IHC:1:20-1:200

Protein Background:

Gene ID:

CDC34

Uniprot

P49427

Synonyms:

Ubiquitin-conjugating enzyme E2 R1 (EC 2.3.2.23) ((E3-independent) E2 ubiquitin-conjugating enzyme R1) (EC 2.3.2.24) (E2 ubiquitin-conjugating enzyme R1) (Ubiquitin-conjugating enzyme E2-32 kDa complementing) (Ubiquitin-conjugating enzyme E2-CDC34) (Ubiquitin-protein ligase R1), CDC34, UBCH3 UBE2R1

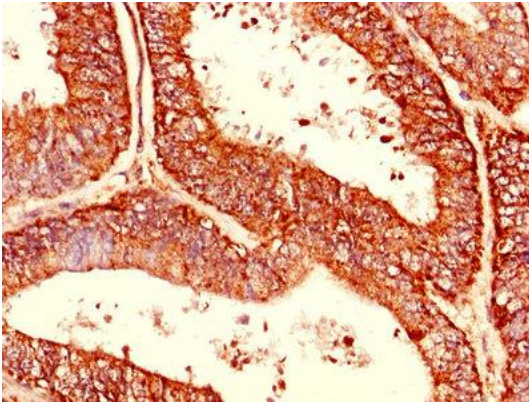
Immunogen:

Recombinant Human Ubiquitin-conjugating enzyme E2 R1 protein (1-236AA).

Storage:

Preservative: 0.03% Proclin 300. Constituents: 50% Glycerol, 0.01M PBS, PH 7.4

Product Images



Immunohistochemistry of paraffin-embedded human endometrial cancer using PACO25652 at dilution of 1:100.