

PACO25680

Product Information

Size:

50ug

Reactivity:

Human, Mouse

Source:

Rabbit

Isotype:

IgG

Applications:

ELISA, WB, IHC, IF

Recommended dilutions:

ELISA:1:2000-1:10000, WB:1:500-1:5000,
IHC:1:20-1:200, IF:1:50-1:200

Protein Background:

Proline-directed serine/threonine-protein kinase essential for neuronal cell cycle arrest and differentiation and may be involved in apoptotic cell death in neuronal diseases by triggering abortive cell cycle re-entry. Interacts with D1 and D3-type G1 cyclins. Phosphorylates SRC, NOS3, VIM/vimentin, p35/CDK5R1, MEF2A, SIPA1L1, SH3GLB1, PXN, PAK1, MCAM/MUC18, SEPT5, SYN1, DNM1, AMPH, SYNJ1, CDK16, RAC1, RHOA, CDC42, TONEBP/NFAT5, MAPT/TAU, MAP1B, histone H1, p53/TP53, HDAC1, APEX1, PTK2/FAK1, huntingtin/HTT, ATM, MAP2, NEFH and NEFM. Regulates several neuronal development and physiological processes including neuronal survival, migration and differentiation, axonal and neurite growth, synaptogenesis, oligodendrocyte differentiation, synaptic plasticity and neurotransmission, by phosphorylating key proteins.

Gene ID:

CDK5

Uniprot

Q00535

Synonyms:

Cyclin-dependent-like kinase 5 (EC 2.7.11.1) (Cell division protein kinase 5) (Serine/threonine-protein kinase PSSALRE) (Tau protein kinase II catalytic subunit) (TPKII catalytic subunit), CDK5, CDKN5

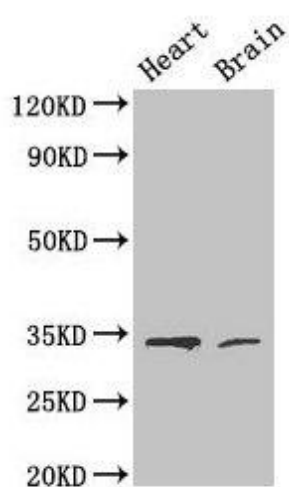
Immunogen:

Recombinant Human Cyclin-dependent-like kinase 5 protein (1-292AA).

Storage:

Preservative: 0.03% Proclin 300. Constituents: 50% Glycerol, 0.01M PBS, PH 7.4

Product Images



Western Blot

Positive WB detected in: Mouse heart tissue, Mouse brain tissue

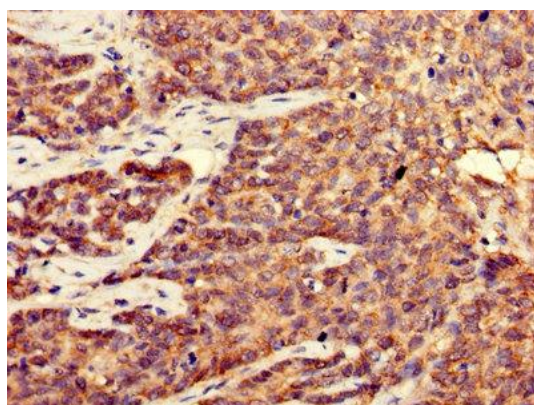
All lanes: CDK5 antibody at 4 μ g/ml

Secondary

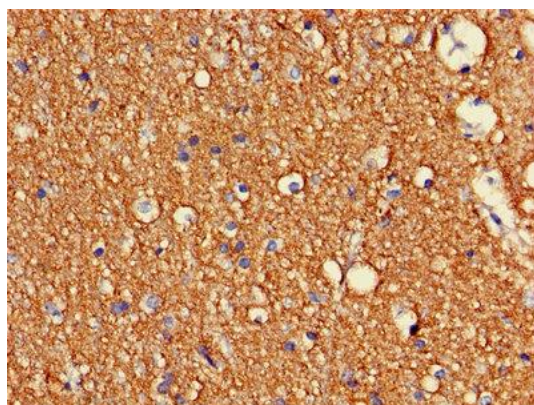
Goat polyclonal to rabbit IgG at 1/50000 dilution

Predicted band size: 34, 30 kDa

Observed band size: 34 kDa



Immunohistochemistry of paraffin-embedded human ovarian cancer using PACO25680 at dilution of 1:100.



Immunohistochemistry of paraffin-embedded human brain tissue using PACO25680 at dilution of 1:100.