

PACO25737

Product Information

Size:

50ug

Reactivity:

Human

Source:

Rabbit

Isotype:

IgG

Applications:

ELISA, IHC

Recommended dilutions:

ELISA:1:2000-1:10000, IHC:1:20-1:200

Protein Background:

Pancreastatin strongly inhibits glucose induced insulin release from the pancreas.

Gene ID:

CHGA

Uniprot

P10645

Synonyms:

Chromogranin-A (CgA) (Pituitary secretory protein I) (SP-I) [Cleaved into: Vasostatin-1 (Vasostatin I); Vasostatin-2 (Vasostatin II); EA-92; ES-43; Pancreastatin; SS-18; WA-8; WE-14; LF-19; Catestatin (SL21); AL-11; GV-19; GR-44; ER-37; GE-25; Serpinin-RRG; Serpinin; p-Glu serpinin precursor], CHGA

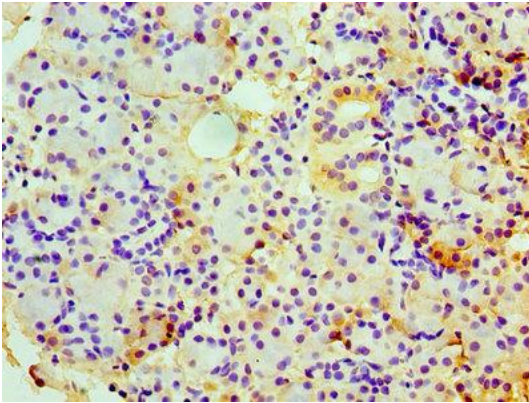
Immunogen:

Recombinant Human Chromogranin-A protein (19-457AA).

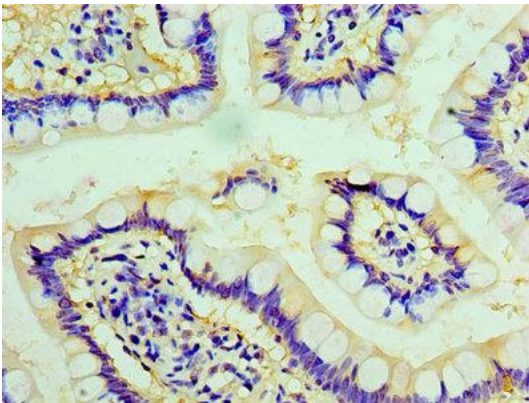
Storage:

Preservative: 0.03% Proclin 300. Constituents: 50% Glycerol, 0.01M PBS, PH 7.4

Product Images



Immunohistochemistry of paraffin-embedded human pancreatic tissue using PACO25737 at dilution of 1:100.



Immunohistochemistry of paraffin-embedded human small intestine tissue using PACO25737 at dilution of 1:100.