

# CRYBA1 Antibody



PACO25953

---

## Product Information

**Size:**

50ug

**Reactivity:**

Human, Mouse

**Source:**

Rabbit

**Isotype:**

IgG

**Applications:**

ELISA, WB, IHC, IF

**Recommended dilutions:**

ELISA:1:2000-1:10000, WB:1:1000-1:5000,  
IHC:1:20-1:200, IF:1:50-1:200

**Protein Background:**

Crystallins are the dominant structural components of the vertebrate eye lens.

**Gene ID:**

CRYBA1

**Uniprot**

P05813

**Synonyms:**

Beta-crystallin A3 [Cleaved into: Beta-crystallin A3, isoform A1, Delta4 form; Beta-crystallin A3, isoform A1, Delta7 form; Beta-crystallin A3, isoform A1, Delta8 form],  
CRYBA1, CRYB1

**Immunogen:**

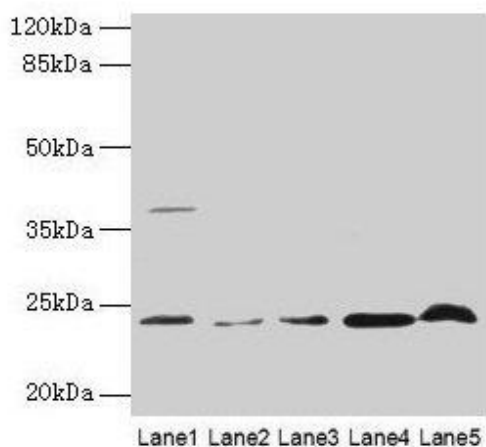
Recombinant Human Beta-crystallin A3 protein (1-215AA).

**Storage:**

Preservative: 0.03% Proclin 300. Constituents: 50% Glycerol, 0.01M PBS, PH 7.4

## Product Images

---



### Western blot

All lanes: CRYBA1 antibody at 6 $\mu$ g/ml

Lane 1: Human placenta tissue

Lane 2: U251 whole cell lysate

Lane 3: U937 whole cell lysate

Lane 4: Mouse stomach tissue

Lane 5: Mouse liver tissue

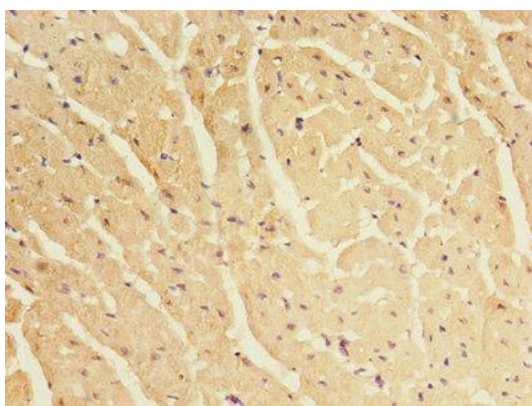
Secondary

Goat polyclonal to rabbit IgG at 1/10000 dilution

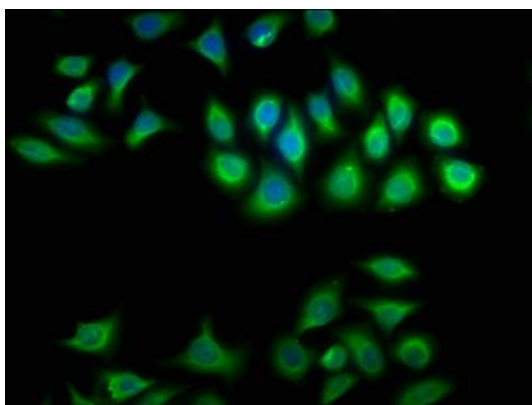
Predicted band size: 26, 24 kDa

Observed band size: 24 kDa

.



Immunohistochemistry of paraffin-embedded human heart tissue using PACO25953 at dilution of 1:100.



Immunofluorescence staining of A549 cells with PACO25953 at 1:100, counter-stained with DAPI. The cells were fixed in 4% formaldehyde, permeabilized using 0.2% Triton X-100 and blocked in 10% normal Goat Serum. The cells were then incubated with the antibody overnight at 4°C. The secondary antibody was Alexa Fluor 488-conjugated AffiniPure Goat Anti-Rabbit IgG(H+L).