

## Product Information

**Size:**

50ug

**Reactivity:**

Human

**Source:**

Rabbit

**Isotype:**

IgG

**Applications:**

ELISA, IHC

**Recommended dilutions:**

ELISA:1:2000-1:10000, IHC:1:20-1:200

**Protein Background:**

Casein kinases are operationally defined by their preferential utilization of acid, c proteins such as caseins as substrates. It can phosphorylate a large number of proteins. Participates in Wnt signaling. Phosphorylates CTNNB1 at 'Ser-45'. May play a role in segregating chromosomes during mitosis.

**Gene ID:**

CSNK1A1

**Uniprot**

P48729

**Synonyms:**

Casein kinase I isoform alpha (CKI-alpha) (EC 2.7.11.1) (CK1), CSNK1A1

**Immunogen:**

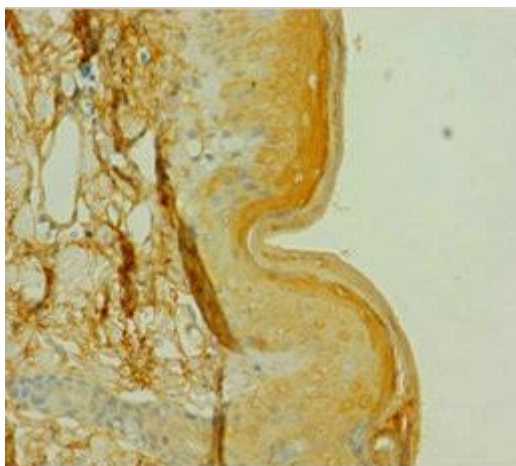
Recombinant Human Casein kinase I isoform &alpha; protein (2-337AA).

**Storage:**

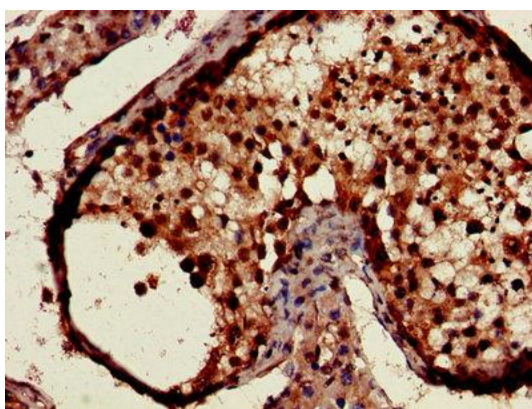
Preservative: 0.03% Proclin 300. Constituents: 50% Glycerol, 0.01M PBS, PH 7.4

## Product Images

---



Immunohistochemistry of paraffin-embedded human skin tissue using PACO25993 at dilution of 1:100.



Immunohistochemistry of paraffin-embedded human testis tissue using PACO25993 at dilution of 1:100.