

# CSNK2A1 Antibody



PACO26001

---

## Product Information

**Size:**

50ug

**Reactivity:**

Human

**Source:**

Rabbit

**Isotype:**

IgG

**Applications:**

ELISA, WB, IHC, IF, IP

**Recommended dilutions:**

ELISA:1:2000-1:10000, WB:1:500-1:5000,  
IHC:1:100-1:500, IF:1:50-1:500, IP:1:200-  
1:2000,

**Protein Background:**

**Gene ID:**

CSNK2A1

**Uniprot**

P68400

**Synonyms:**

Casein kinase II subunit alpha (CK II alpha) (EC 2.7.11.1), CSNK2A1, CK2A1

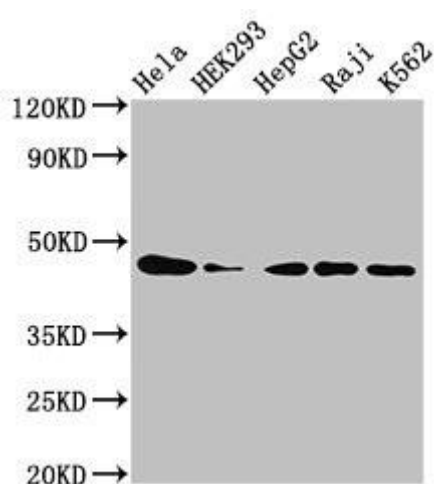
**Immunogen:**

Recombinant Human Casein kinase II subunit &alpha; protein (1-391AA).

**Storage:**

Preservative: 0.03% Proclin 300. Constituents: 50% Glycerol, 0.01M PBS, PH 7.4

## Product Images



### Western Blot

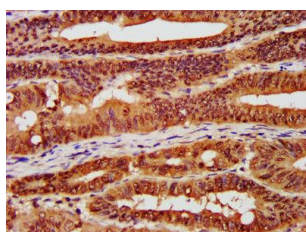
Positive WB detected in: HeLa whole cell lysate, HEK293 whole cell lysate, HepG2 whole cell lysate, Raji whole cell lysate, K562 whole cell lysate  
All lanes: CSNK2A1 antibody at 3µg/ml

### Secondary

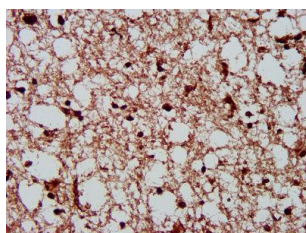
Goat polyclonal to rabbit IgG at 1/50000 dilution

Predicted band size: 46, 30 kDa

Observed band size: 46 kDa



IHC image of PACO26001 diluted at 1:300 and staining in paraffin-embedded human colon cancer performed on a Leica Bond™ system. After dewaxing and hydration, antigen retrieval was mediated by high pressure in a citrate buffer (pH 6.0). Section was blocked with 10% normal goat serum 30min at RT. Then primary antibody (1% BSA) was incubated at 4°C overnight. The primary is detected by a biotinylated secondary antibody and visualized using an HRP conjugated SP system.



IHC image of PACO26001 diluted at 1:300 and staining in paraffin-embedded human brain tissue performed on a Leica Bond™ system. After dewaxing and hydration, antigen retrieval was mediated by high pressure in a citrate buffer (pH 6.0). Section was blocked with 10% normal goat serum 30min at RT. Then primary antibody (1% BSA) was incubated at 4°C overnight. The primary is detected by a biotinylated secondary antibody and visualized using an HRP conjugated SP system.