

PACO26017

Product Information

Size:

50ug

Reactivity:

Human

Source:

Rabbit

Isotype:

IgG

Applications:

ELISA, WB, IHC

Recommended dilutions:

ELISA:1:2000-1:10000, WB:1:500-1:5000,
IHC:1:20-1:200

Protein Background:

This enzyme is involved in the de novo synthesis of CTP, a precursor of DNA, RNA and phospholipids. Catalyzes the ATP-dependent amination of UTP to CTP with either L-glutamine or ammonia as a source of nitrogen. This enzyme and its product, CTP, play a crucial role in the proliferation of activated lymphocytes and therefore in immunity.

Gene ID:

CTPS1

Uniprot

P17812

Synonyms:

CTP synthase 1 (EC 6.3.4.2) (CTP synthetase 1) (UTP--ammonia ligase 1), CTPS1, CTPS

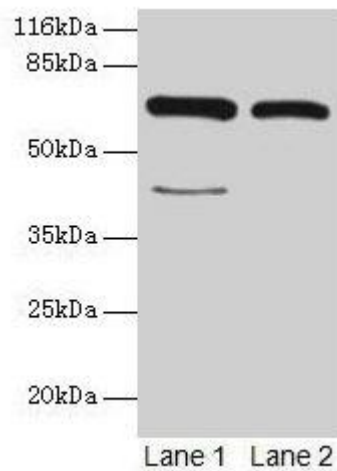
Immunogen:

Recombinant Human CTP synthase 1 protein (300-554AA).

Storage:

Preservative: 0.03% Proclin 300. Constituents: 50% Glycerol, 0.01M PBS, PH 7.4

Product Images



Western blot

All lanes: CTPS1 antibody at 6 μ g/ml

Lane 1: Hela whole cell lysate

Lane 2: 293T whole cell lysate

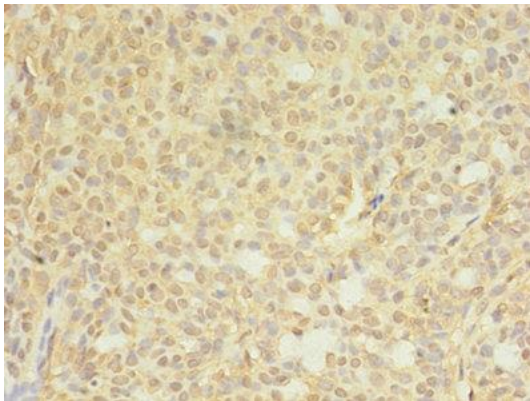
Secondary

Goat polyclonal to rabbit IgG at 1/10000 dilution

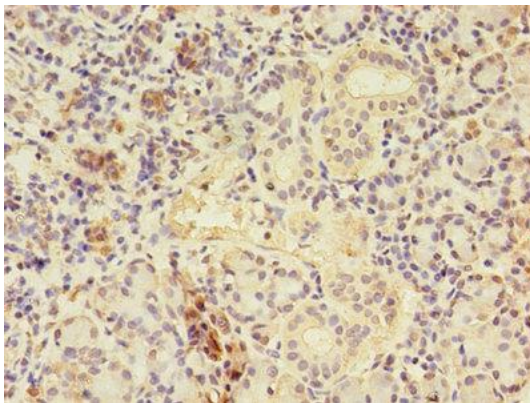
Predicted band size: 67, 42 kDa

Observed band size: 67 kDa

.



Immunohistochemistry of paraffin-embedded human breast cancer using PACO26017 at dilution of 1:100.



Immunohistochemistry of paraffin-embedded human pancreatic tissue using PACO26017 at dilution of 1:100.