

PACO26033

Product Information

Size:

50ug

Reactivity:

Rat

Source:

Rabbit

Isotype:

IgG

Applications:

ELISA, IHC

Recommended dilutions:

ELISA:1:2000-1:10000, IHC:1:10-1:100

Protein Background:

Closely involved in osteoclastic bone resorption and may participate partially in the disorder of bone remodeling. Displays potent endoprotease activity against fibrinogen at acid, pH. May play an important role in extracellular matrix degradation By similarity.

Gene ID:

Ctsk

Uniprot

O35186

Synonyms:

Cathepsin K (EC 3.4.22.38), Ctsk

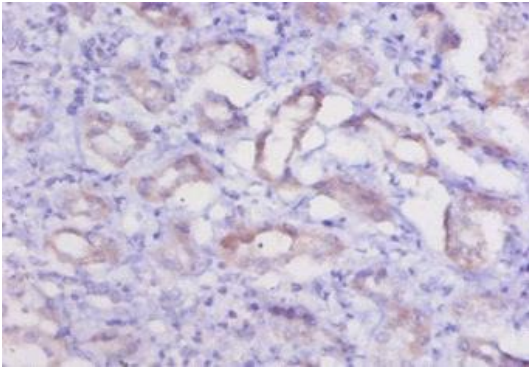
Immunogen:

Recombinant Rat Cathepsin K protein (115-329AA).

Storage:

Preservative: 0.03% Proclin 300. Constituents: 50% Glycerol, 0.01M PBS, PH 7.4

Product Images



Immunohistochemistry of paraffin-embedded human kidney tissue using PACO26033 at dilution of 1:20.