

CYP11A1 Antibody



PACO26089

Product Information

Size:

50ug

Reactivity:

Human, Rat

Source:

Rabbit

Isotype:

IgG

Applications:

ELISA, WB, IHC

Recommended dilutions:

ELISA:1:2000-1:10000, WB:1:1000-1:5000,
IHC:1:20-1:200

Protein Background:

Catalyzes the side-chain cleavage reaction of cholesterol to pregnenolone.

Gene ID:

CYP11A1

Uniprot

P05108

Synonyms:

Cholesterol side-chain cleavage enzyme, mitochondrial (EC 1.14.15.6) (CYPXIA1) (Cholesterol desmolase) (Cytochrome P450 11A1) (Cytochrome P450(scc)), CYP11A1, CYP11A

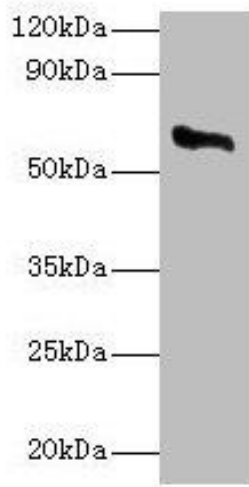
Immunogen:

Recombinant Human Cholesterol side-chain cleavage enzyme, mitochondrial protein (40-521AA).

Storage:

Preservative: 0.03% Proclin 300. Constituents: 50% Glycerol, 0.01M PBS, PH 7.4

Product Images



Western blot

All lanes: CYP11A1 antibody at 2 μ g/ml + Rat adrenal gland tissue

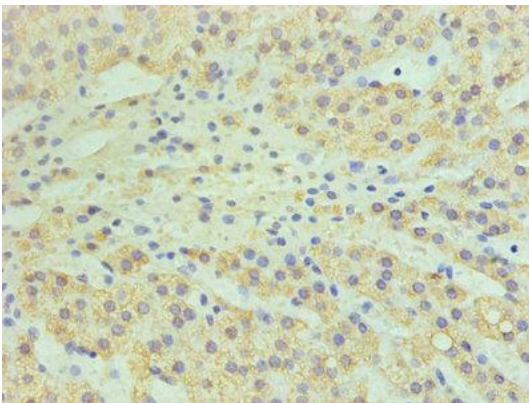
Secondary

Goat polyclonal to rabbit IgG at 1/10000 dilution

Predicted band size: 61, 43 kDa

Observed band size: 61 kDa

.



Immunohistochemistry of paraffin-embedded human adrenal gland tissue using PACO26089 at dilution of 1:100.