

MP68 Antibody



PACO26217

Product Information

Size:

50ug

Reactivity:

Human

Source:

Rabbit

Isotype:

IgG

Applications:

ELISA, WB, IHC, IF

Recommended dilutions:

ELISA:1:2000-1:10000, WB:1:500-1:2000,
IHC:1:20-1:200, IF:1:50-1:200

Protein Background:

Belongs to the small mitochondrial proteolipid family.

Gene ID:

MP68

Uniprot

P56378

Synonyms:

6.8 kDa mitochondrial proteolipid, MP68, C14orf2

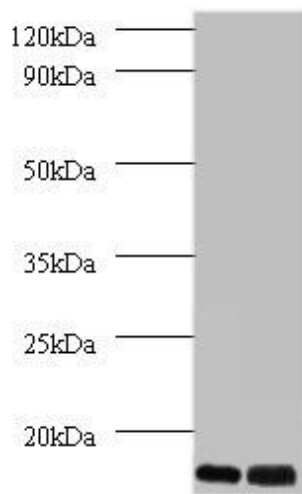
Immunogen:

Recombinant Human 6.8 kDa mitochondrial proteolipid protein (1-58AA).

Storage:

Preservative: 0.03% Proclin 300. Constituents: 50% Glycerol, 0.01M PBS, PH 7.4

Product Images



Western blot

All lanes: 6.8 kDa mitochondrial proteolipid antibody at 2 μ g/ml

Lane 1: EC109 whole cell lysate

Lane 2: 293T whole cell lysate

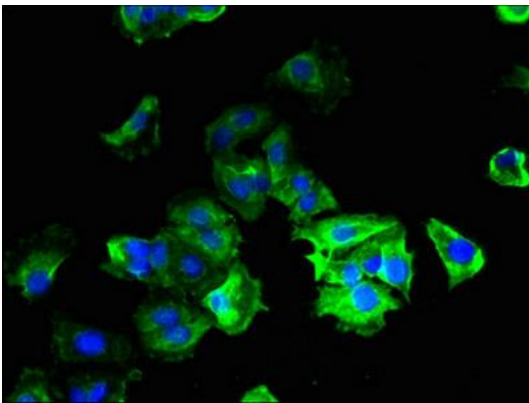
Secondary

Goat polyclonal to rabbit IgG at 1/15000 dilution

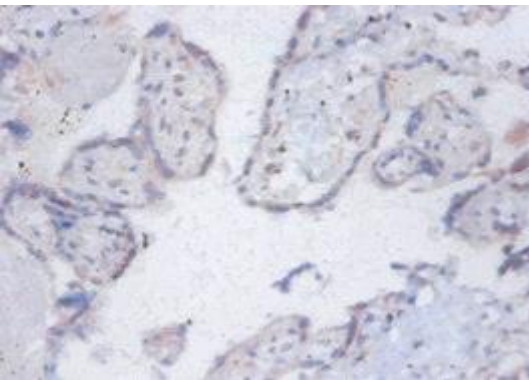
Predicted band size: 7, 9 kDa

Observed band size: 7 kDa

.



Immunofluorescent analysis of MCF-7 cells using PACO26217 at dilution of 1:100 and Alexa Fluor 488-conjugated AffiniPure Goat Anti-Rabbit IgG(H+L).



Immunohistochemistry of paraffin-embedded human placenta tissue using PACO26217 at dilution of 1:100.