

DTWD1 Antibody



PACO26353

Product Information

Size:

50ug

Reactivity:

Human

Source:

Rabbit

Isotype:

IgG

Applications:

ELISA, IHC, IF

Recommended dilutions:

ELISA:1:2000-1:10000, IHC:1:20-1:200,
IF:1:50-1:200

Protein Background:**Gene ID:**

DTWD1

Uniprot

Q8N5C7

Synonyms:

DTW domain-containing protein 1, DTWD1

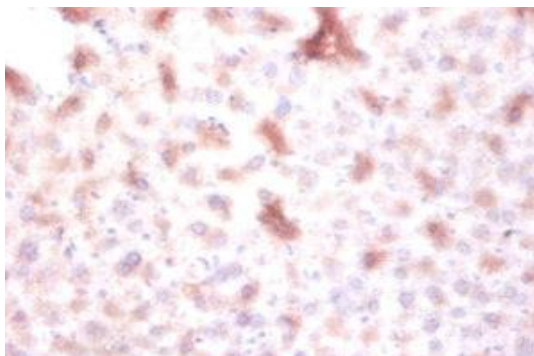
Immunogen:

Recombinant Human DTW domain-containing protein 1 protein (1-109AA).

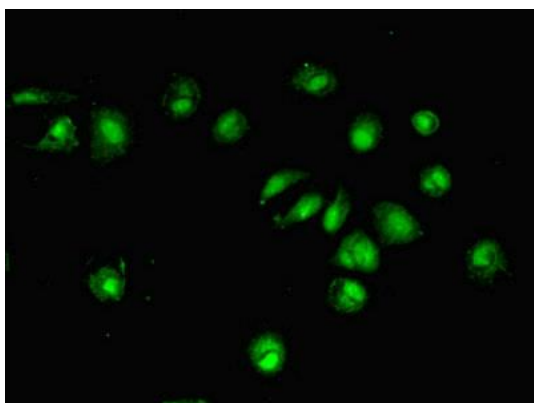
Storage:

Preservative: 0.03% Proclin 300. Constituents: 50% Glycerol, 0.01M PBS, PH 7.4

Product Images



Immunohistochemistry of paraffin-embedded mouse liver tissue using PACO26353 at dilution of 1:100.



Immunofluorescent analysis of MCF-7 cells using PACO26353 at dilution of 1:100 and Alexa Fluor 488-conjugated AffiniPure Goat Anti-Rabbit IgG(H+L).