

Product Information

Size:

50ug

Reactivity:

Human

Source:

Rabbit

Isotype:

IgG

Applications:

ELISA, IHC

Recommended dilutions:

ELISA:1:2000-1:10000, IHC:1:50-1:200

Protein Background:

Negative regulator of EPO-dependent erythropoiesis, may place an upper limit on red cell production during stress erythropoiesis. Inhibits cell death due to cytokine withdrawal in hematopoietic progenitor cells. May act by regulating CREB/CRE signaling.

Gene ID:

DYRK3

Uniprot

O43781

Synonyms:

Dual specificity tyrosine-phosphorylation-regulated kinase 3 (EC 2.7.12.1) (Regulatory erythroid kinase) (REDK), DYRK3

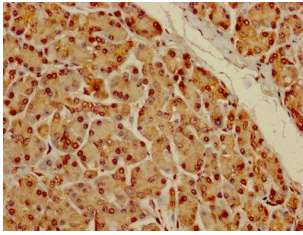
Immunogen:

Recombinant Human Dual specificity tyrosine-phosphorylation-regulated kinase 3 protein (1-300AA).

Storage:

Preservative: 0.03% Proclin 300. Constituents: 50% Glycerol, 0.01M PBS, PH 7.4

Product Images



IHC image of PACO26365 diluted at 1:100 and staining in paraffin-embedded human pancreatic tissue performed on a Leica Bond™ system. After dewaxing and hydration, antigen retrieval was mediated by high pressure in a citrate buffer (pH 6.0). Section was blocked with 10% normal goat serum 30min at RT. Then primary antibody (1% BSA) was incubated at 4°C overnight. The primary is detected by a biotinylated secondary antibody and visualized using an HRP conjugated SP system.