

PACO26501

Product Information

Size:

50ug

Reactivity:

Goat

Source:

Guinea pig

Isotype:

IgG

Applications:

ELISA, WB

Recommended dilutions:

ELISA:1:2000-1:10000, WB:1:1000-1:5000

Protein Background:

The basic structure of IgG molecule is composed of four polypeptide chains, that is, from the same two small molecular weight peptides (referred to as light chain, Light chain, L chain, the relative molecular mass of about 25,000) and two identical large molecular weight peptides (called heavy chain, heavy chain, H Chain, relative molecular mass of about 55,000) composed. A natural two heavy chains of IgG molecules are always the same. The goat IgG antibodies can specifically recognize the heavy Chain.

Gene ID:

Uniprot

Synonyms:

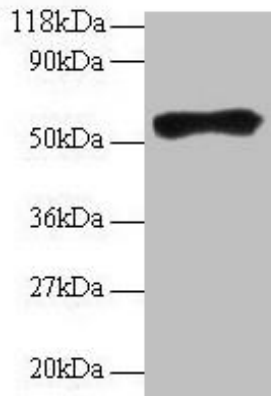
Immunogen:

Goat IgG heavy chain (Native Protein).

Storage:

Preservative: 0.03% Proclin 300. Constituents: 50% Glycerol, 0.01M PBS, PH 7.4

Product Images



Western blot

All lanes: Goat IgG heavy chain antibody at 2 μ g/ml + Goat serum at 1:100

Secondary

Rabbit polyclonal to Guinea pig IgG at 1/15000 dilution

Predicted band size: 55 kDa

Observed band size: 55 kDa

.