

# F11 Antibody



PACO26597

---

## Product Information

**Size:**

50ug

**Reactivity:**

Human

**Source:**

Rabbit

**Isotype:**

IgG

**Applications:**

ELISA, IHC

**Recommended dilutions:**

ELISA:1:2000-1:10000, IHC:1:20-1:200

**Protein Background:**

Factor XI triggers the middle phase of the intrinsic pathway of blood coagulation by activating factor IX.

**Gene ID:**

F11

**Uniprot**

P03951

**Synonyms:**

Coagulation factor XI (FXI) (EC 3.4.21.27) (Plasma thromboplastin antecedent) (PTA) [Cleaved into: Coagulation factor XIa heavy chain; Coagulation factor XIa light chain], F11

**Immunogen:**

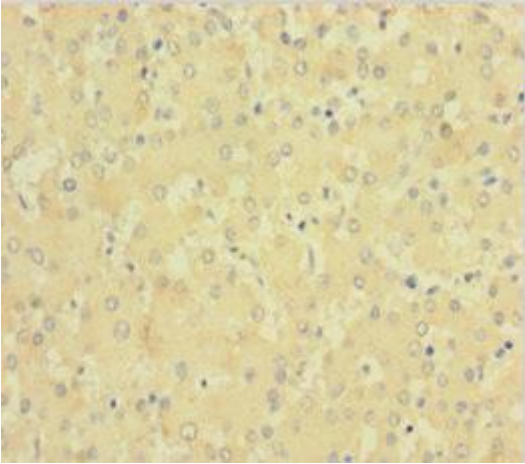
Recombinant Human Coagulation factor XI protein (19-387AA).

**Storage:**

Preservative: 0.03% Proclin 300. Constituents: 50% Glycerol, 0.01M PBS, PH 7.4

## Product Images

---



Immunohistochemistry of paraffin-embedded human liver tissue using PACO26597 at dilution of 1:100.