

## Product Information

**Size:**

50ug

**Reactivity:**

Human

**Source:**

Rabbit

**Isotype:**

IgG

**Applications:**

ELISA, IHC

**Recommended dilutions:**

ELISA:1:2000-1:10000, IHC:1:20-1:200

**Protein Background:**

Stress-inducible actin-binding protein that plays a role in synaptic and cognitive functions by modulating actin filamentous (F-actin) dynamics. Mediates polymerization of globular actin to F-actin. Also binds to, stabilizes and bundles F-actin. Involved in synaptic function by regulating neurite outgrowth in an actin-dependent manner and for the acquisition of hippocampus-dependent cognitive function, such as learning and long-term memory. Plays a role in the actin and microtubule cytoskeleton organization; negatively regulates focal adhesion (FA) assembly promoting malignant glial cell migration in an actin-, microtubule- and MAP1A-dependent manner. Also involved in neuroblastoma G1/S phase cell cycle progression and cell proliferation inhibition by stimulating ubiquitination of NF-kappa-B subunit RELA and NF-kappa-B degradation in a COMMD1- and actin-dependent manner. May play a role in tumor development.

**Gene ID:**

FAM107A

**Uniprot**

O95990

**Synonyms:**

Actin-associated protein FAM107A (Down-regulated in renal cell carcinoma 1) (Protein TU3A), FAM107A, DRR1 TU3A

**Immunogen:**

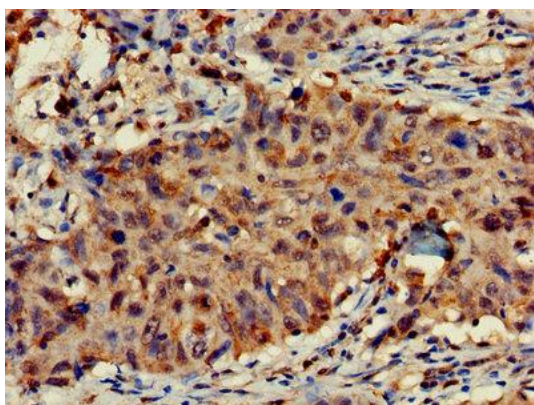
Recombinant Human Actin-associated protein FAM107A protein (1-144AA).

**Storage:**

Preservative: 0.03% Proclin 300. Constituents: 50% Glycerol, 0.01M PBS, PH 7.4

## Product Images

---



Immunohistochemistry of paraffin-embedded human lung cancer using PACO26641 at dilution of 1:100.