

# FBXL18 Antibody



PACO26697

---

## Product Information

**Size:**

50ug

**Reactivity:**

Human

**Source:**

Rabbit

**Isotype:**

IgG

**Applications:**

ELISA, IHC, IF

**Recommended dilutions:**

ELISA:1:2000-1:10000, IHC:1:20-1:200,  
IF:1:50-1:200

**Protein Background:**

Substrate-recognition component of the SCF (SKP1-CUL1-F-box protein)-type E3 ubiquitin ligase complex.

**Gene ID:**

FBXL18

**Uniprot**

Q96ME1

**Synonyms:**

F-box/LRR-repeat protein 18 (F-box and leucine-rich repeat protein 18), FBXL18, FBL18

**Immunogen:**

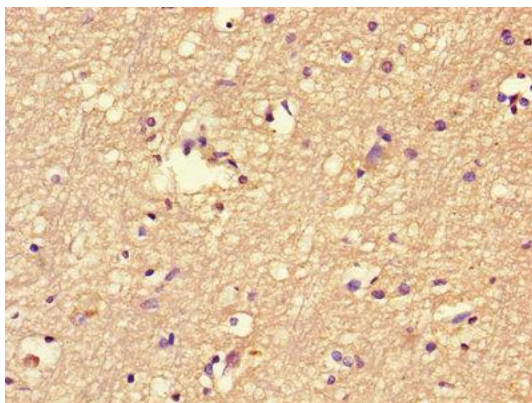
Recombinant Human F-box/LRR-repeat protein 18 protein (1-365AA).

**Storage:**

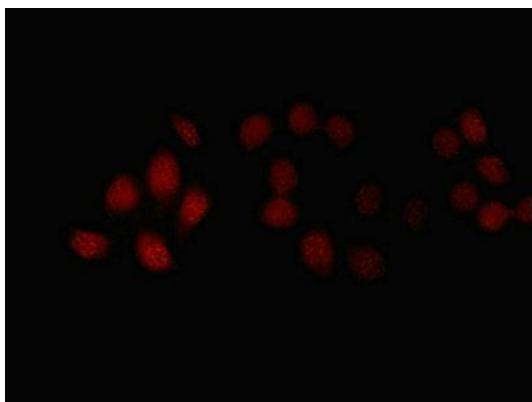
Preservative: 0.03% Proclin 300. Constituents: 50% Glycerol, 0.01M PBS, PH 7.4

## Product Images

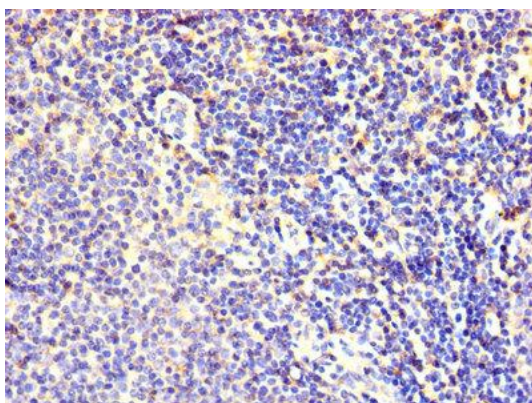
---



Immunohistochemistry of paraffin-embedded human brain tissue using PACO26697 at dilution of 1:100.



Immunofluorescent analysis of A549 cells using PACO26697 at dilution of 1:100 and Cy3-conjugated Goat Anti-Rabbit IgG.



Immunohistochemistry of paraffin-embedded human lymphoid tissue using PACO26697 at dilution of 1:100.