

FCSD2 Antibody



PACO26713

Product Information

Size:

50ug

Reactivity:

Human

Source:

Rabbit

Isotype:

IgG

Applications:

ELISA, WB, IHC

Recommended dilutions:

ELISA:1:2000-1:10000, WB:1:500-1:2000,
IHC:1:20-1:200

Protein Background:

Gene ID:

FCSD2

Uniprot

O94868

Synonyms:

F-BAR and double SH3 domains protein 2 (Carom) (SH3 multiple domains protein 3),
FCSD2, KIAA0769 SH3MD3

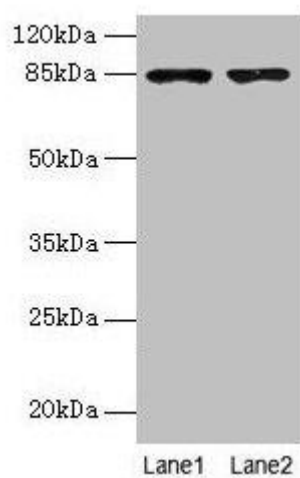
Immunogen:

Recombinant Human F-BAR and double SH3 domains protein 2 protein (1-290AA).

Storage:

Preservative: 0.03% Proclin 300. Constituents: 50% Glycerol, 0.01M PBS, PH 7.4

Product Images



Western blot

All lanes: FCHSD2 antibody at 12 μ g/ml

Lane 1: U251 whole cell lysate

Lane 2: A549 whole cell lysate

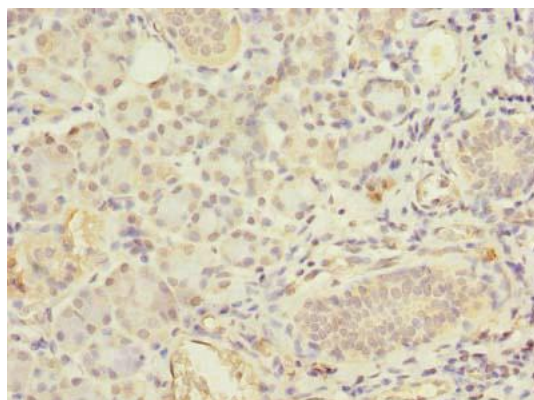
Secondary

Goat polyclonal to rabbit IgG at 1/10000 dilution

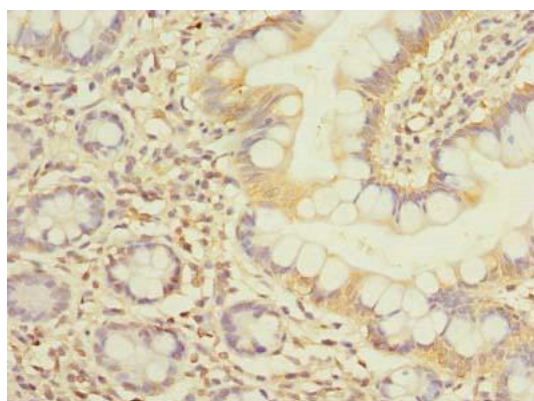
Predicted band size: 85, 78, 59 kDa

Observed band size: 85 kDa

.



Immunohistochemistry of paraffin-embedded human pancreatic tissue using PACO26713 at dilution of 1:100.



Immunohistochemistry of paraffin-embedded human small intestine tissue using PACO26713 at dilution of 1:100.