

Product Information

Size:

50ug

Reactivity:

Human

Source:

Rabbit

Isotype:

IgG

Applications:

ELISA, WB, IHC, IF

Recommended dilutions:

ELISA:1:2000-1:10000, WB:1:500-1:5000,
IHC:1:20-1:200, IF:1:50-1:200

Protein Background:

endoplasmic reticulum, endoplasmic reticulum membrane, integral component of membrane, farnesyl-diphosphate farnesyltransferase activity, cellular lipid metabolic process, cholesterol biosynthetic process, small molecule metabolic process, steroid biosynthetic process.

Gene ID:

FDFT1

Uniprot

P37268

Synonyms:

Squalene synthase (SQS) (SS) (EC 2.5.1.21) (FPP: FPP farnesyltransferase) (Farnesyl-diphosphate farnesyltransferase), FDFT1

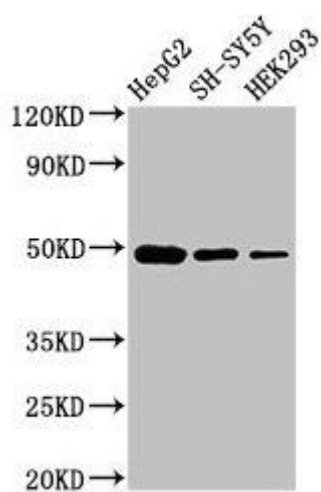
Immunogen:

Recombinant Human Squalene synthase protein (2-417AA).

Storage:

Preservative: 0.03% Proclin 300. Constituents: 50% Glycerol, 0.01M PBS, PH 7.4

Product Images



Western Blot

Positive WB detected in: HepG2 whole cell lysate, SH-SY5Y whole cell lysate, HEK293 whole cell lysate

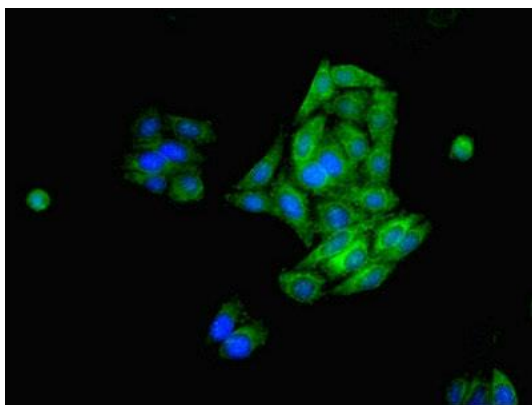
All lanes: FDFT1 antibody at 3 μ g/ml

Secondary

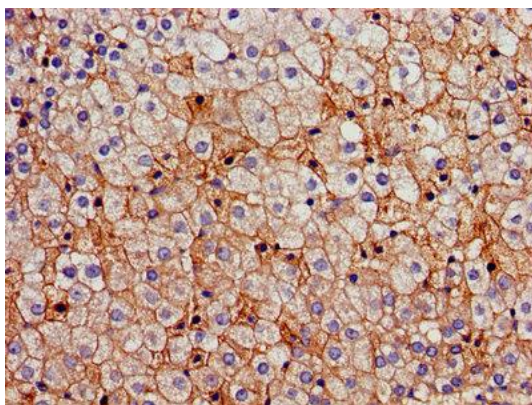
Goat polyclonal to rabbit IgG at 1/50000 dilution

Predicted band size: 49, 41, 39, 36, 44 kDa

Observed band size: 49 kDa



Immunofluorescent analysis of HepG2 cells using PACO26717 at dilution of 1:100 and Alexa Fluor 488-conjugated AffiniPure Goat Anti-Rabbit IgG(H+L).



Immunohistochemistry of paraffin-embedded human adrenal gland tissue using PACO26717 at dilution of 1:100.