

## Product Information

**Size:**

50ug

**Reactivity:**

Human, Mouse

**Source:**

Rabbit

**Isotype:**

IgG

**Applications:**

ELISA, WB, IHC

**Recommended dilutions:**

ELISA:1:2000-1:10000, WB:1:1000-1:5000,  
IHC:1:20-1:200

**Protein Background:**

Microtubule-binding protein which directly binds tubulin and is involved in both polymerization and stabilization of microtubules. Through its action on microtubules, may participate to the refinement of axons by negatively regulating axonal and leading processes branching. Plays a crucial role in neuron polarization and migration in the cerebral cortex and the hippocampus.

**Gene ID:**

FGF13

**Uniprot**

Q92913

**Synonyms:**

Fibroblast growth factor 13 (FGF-13) (Fibroblast growth factor homologous factor 2) (FHF-2), FGF13, FHF2

**Immunogen:**

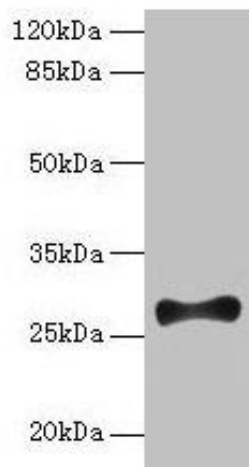
Recombinant Human Fibroblast growth factor 13 protein (1-245AA).

**Storage:**

Preservative: 0.03% Proclin 300. Constituents: 50% Glycerol, 0.01M PBS, PH 7.4

## Product Images

---



### Western blot

All lanes: FGF13 antibody at 12 $\mu$ g/ml + Mouse brain tissue

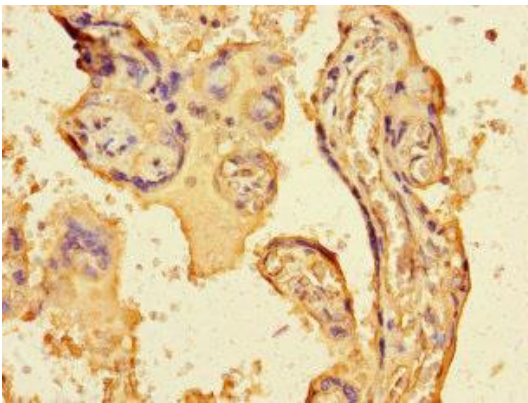
Secondary

Goat polyclonal to rabbit IgG at 1/10000 dilution

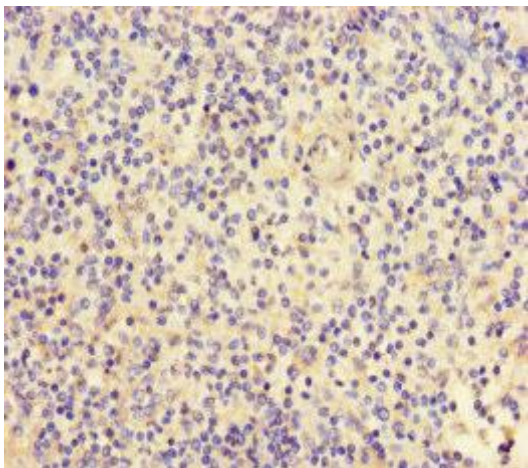
Predicted band size: 28, 22, 29, 23, 26 kDa

Observed band size: 28 kDa

.



Immunohistochemistry of paraffin-embedded human placenta tissue using PACO26745 at dilution of 1:100.



Immunohistochemistry of paraffin-embedded human spleen tissue using PACO26745 at dilution of 1:100.