

PACO26753

---

## Product Information

**Size:**

50ug

**Reactivity:**

Rat

**Source:**

Rabbit

**Isotype:**

IgG

**Applications:**

ELISA, WB

**Recommended dilutions:**

ELISA:1:2000-1:10000, WB:1:1000-1:5000

**Protein Background:**

Regulator of phosphate homeostasis. Inhibits renal tubular phosphate transport by reducing SLC34A1 levels. Regulator of vitamin-D metabolism. Negatively regulates osteoblasts differentiation and. matrix mineralization. Acts directly on the parathyroid to decrease PTH secretion. Upregulates EGR1. expression in the presence of KL.

**Gene ID:**

Fgf23

**Uniprot**

Q8VI82

**Synonyms:**

Fibroblast growth factor 23 (FGF-23), Fgf23

**Immunogen:**

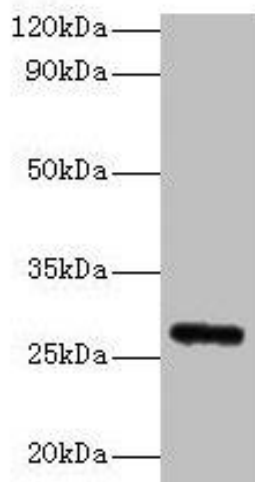
Recombinant Rat Fibroblast growth factor 23 protein (25-251AA).

**Storage:**

Preservative: 0.03% Proclin 300. Constituents: 50% Glycerol, 0.01M PBS, PH 7.4

## Product Images

---



### Western blot

All lanes: Fgf23 antibody at 2 $\mu$ g/ml + Rat heart tissue

Secondary

Goat polyclonal to rabbit IgG at 1/10000 dilution

Predicted band size: 28 kDa

Observed band size: 28 kDa

.