
Product Information

Size:

50ug

Reactivity:

Human

Source:

Rabbit

Isotype:

IgG

Applications:

ELISA, WB, IHC, IF

Recommended dilutions:

ELISA:1:2000-1:10000, WB:1:500-1:5000,
IHC:1:20-1:200, IF:1:50-1:200

Protein Background:

Co-chaperone required during spermatogenesis to repress transposable elements and prevent their mobilization, which is essential for the germline integrity. Acts via the piRNA metabolic process, which mediates the repression of transposable elements during meiosis by forming complexes composed of piRNAs and Piwi proteins and govern the methylation and subsequent repression of transposons. Acts as a co-chaperone via its interaction with HSP90 and is required for the piRNA amplification process, the secondary piRNA biogenesis. May be required together with HSP90 in removal of 16 nucleotide ping-pong by-products from Piwi complexes, possibly facilitating turnover of Piwi complexes.

Gene ID:

FKBP6

Uniprot

O75344

Synonyms:

Inactive peptidyl-prolyl cis-trans isomerase FKBP6 (Inactive PPIase FKBP6) (36 kDa FK506-binding protein) (36 kDa FKBP) (FKBP-36) (FK506-binding protein 6) (FKBP-6) (Immunophilin FKBP36), FKBP6, FKBP36

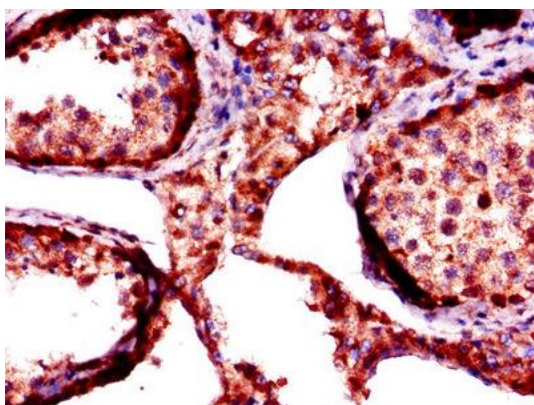
Immunogen:

Recombinant Human Inactive peptidyl-prolyl cis-trans isomerase FKBP6 protein (101-327AA).

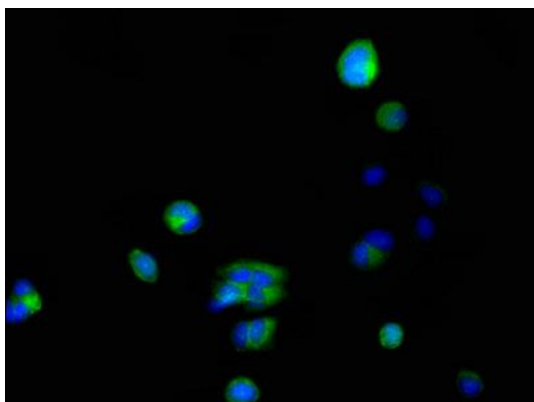
Storage:

Preservative: 0.03% Proclin 300. Constituents: 50% Glycerol, 0.01M PBS, PH 7.4

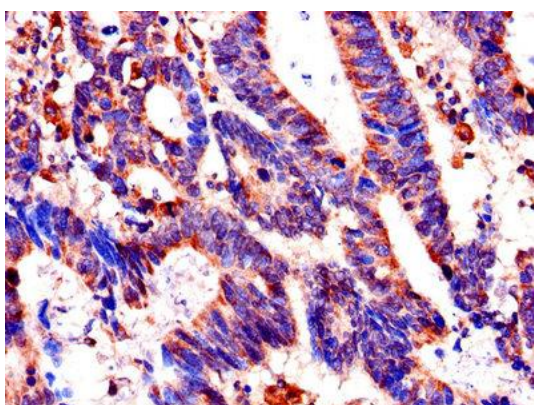
Product Images



Immunohistochemistry of paraffin-embedded human testis tissue using PACO26781 at dilution of 1:100.



Immunofluorescent analysis of MCF-7 cells using PACO26781 at dilution of 1:100 and Alexa Fluor 488-conjugated AffiniPure Goat Anti-Rabbit IgG(H+L).



Immunohistochemistry of paraffin-embedded human colon cancer using PACO26781 at dilution of 1:100.