

PACO26789

---

## Product Information

**Size:**

50ug

**Reactivity:**

Human

**Source:**

Rabbit

**Isotype:**

IgG

**Applications:**

ELISA, IHC

**Recommended dilutions:**

ELISA:1:2000-1:10000, IHC:1:20-1:200

**Protein Background:**

Aggregates keratin intermediate filaments and promotes disulfide-bond formation among the intermediate filaments during terminal differentiation of mammalian epidermis.

**Gene ID:**

FLG

**Uniprot**

P20930

**Synonyms:**

Filaggrin, FLG

**Immunogen:**

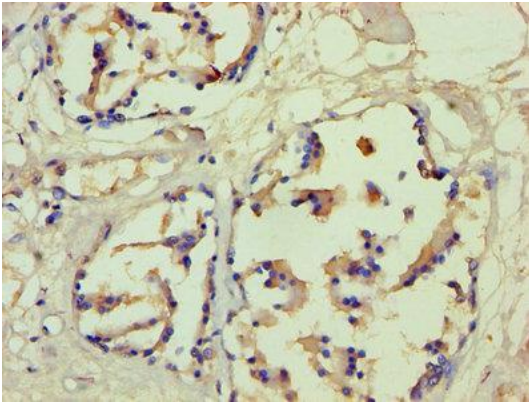
Recombinant Human Filaggrin protein (3838-4061AA).

**Storage:**

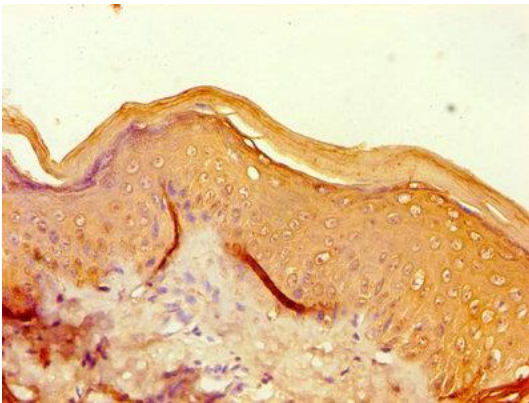
Preservative: 0.03% Proclin 300. Constituents: 50% Glycerol, 0.01M PBS, PH 7.4

## Product Images

---



Immunohistochemistry of paraffin-embedded human prostate tissue using PACO26789 at dilution of 1:100.



Immunohistochemistry of paraffin-embedded human skin tissue using PACO26789 at dilution of 1:100.