

Product Information

Size:

50ug

Reactivity:

Human

Source:

Rabbit

Isotype:

IgG

Applications:

ELISA, IHC, IF

Recommended dilutions:

ELISA:1:2000-1:10000, IHC:1:20-1:200,
IF:1:200-1:500

Protein Background:

Adapter protein that links FGF and NGF receptors to downstream signaling pathways. Involved in the activation of MAP kinases. Down-regulates ERK2 signaling by interfering with the phosphorylation and nuclear translocation of ERK2.

Gene ID:

FRS3

Uniprot

O43559

Synonyms:

Fibroblast growth factor receptor substrate 3 (FGFR substrate 3) (FGFR-signaling adaptor SNT2) (Suc1-associated neurotrophic factor target 2) (SNT-2), FRS3

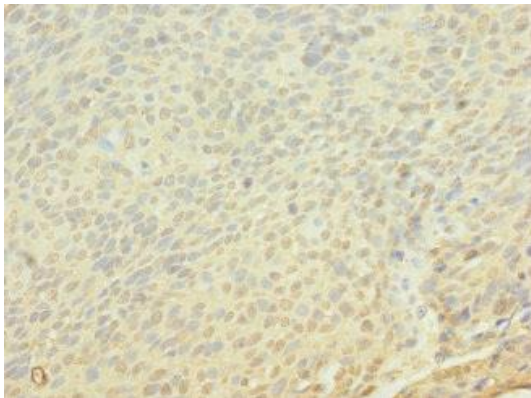
Immunogen:

Recombinant Human Fibroblast growth factor receptor substrate 3 protein (101-400AA).

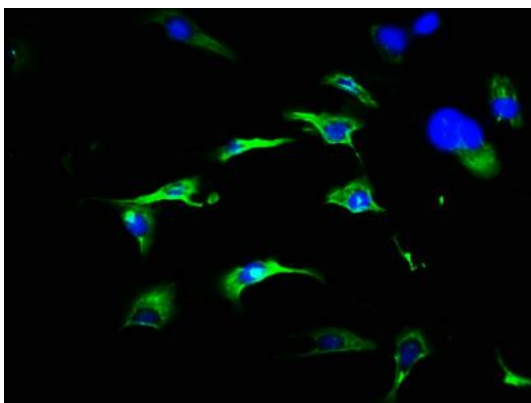
Storage:

Preservative: 0.03% Proclin 300. Constituents: 50% Glycerol, 0.01M PBS, PH 7.4

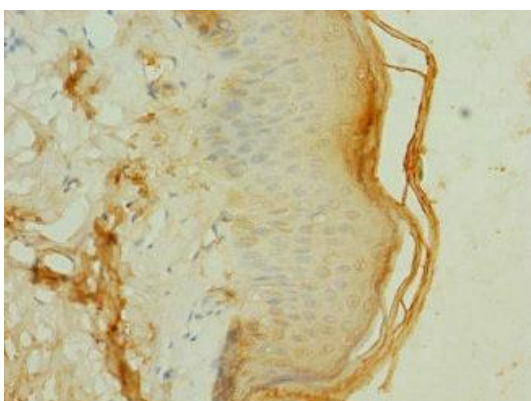
Product Images



Immunohistochemistry of paraffin-embedded human cervical cancer using PACO26833 at dilution of 1:100.



Immunofluorescence staining of U251 cells with PACO26833 at 1:466, counter-stained with DAPI. The cells were fixed in 4% formaldehyde, permeabilized using 0.2% Triton X-100 and blocked in 10% normal Goat Serum. The cells were then incubated with the antibody overnight at 4°C. The secondary antibody was Alexa Fluor 488-conjugated AffiniPure Goat Anti-Rabbit IgG(H+L).



Immunohistochemistry of paraffin-embedded human skin tissue using PACO26833 at dilution of 1:100.