

# GDAP1L1 Antibody



PACO26933

---

## Product Information

**Size:**

50ug

**Reactivity:**

Human

**Source:**

Rabbit

**Isotype:**

IgG

**Applications:**

ELISA, WB, IHC

**Recommended dilutions:**

ELISA:1:2000-1:10000, WB:1:500-1:2000,  
IHC:1:20-1:200

**Protein Background:**

cytoplasm, glutathione transferase activity, glutathione metabolic process.

**Gene ID:**

GDAP1L1

**Uniprot**

Q96MZ0

**Synonyms:**

Ganglioside-induced differentiation-associated protein 1-like 1 (GDAP1-L1), GDAP1L1

**Immunogen:**

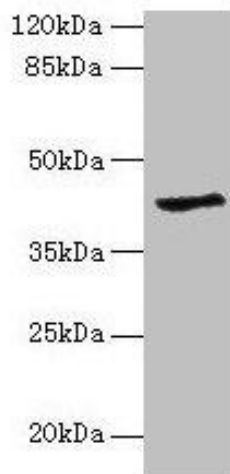
Recombinant Human Ganglioside-induced differentiation-associated protein 1-like 1 protein (101-260AA).

**Storage:**

Preservative: 0.03% Proclin 300. Constituents: 50% Glycerol, 0.01M PBS, PH 7.4

## Product Images

---



### Western blot

All lanes: GDAP1L1 antibody at 8 $\mu$ g/ml + Hela whole cell lysate

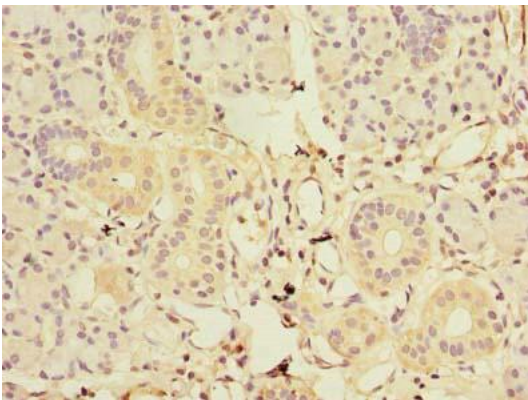
Secondary

Goat polyclonal to rabbit IgG at 1/10000 dilution

Predicted band size: 42, 17, 44 kDa

Observed band size: 42 kDa

.



Immunohistochemistry of paraffin-embedded human pancreatic tissue using PACO26933 at dilution of 1:100.