

# Gdf5 Antibody



PACO26937

---

## Product Information

**Size:**

50ug

**Reactivity:**

Mouse

**Source:**

Rabbit

**Isotype:**

IgG

**Applications:**

ELISA, IHC

**Recommended dilutions:**

ELISA:1:2000-1:10000, IHC:1:10-1:100

**Protein Background:**

Could be involved in bone and cartilage formation. Chondrogenic signaling is mediated by the high-affinity receptor BMPR1B.

**Gene ID:**

Gdf5

**Uniprot**

P43027

**Synonyms:**

Growth/differentiation factor 5 (GDF-5) (Bone morphogenetic protein 14) (BMP-14), Gdf5, Bmp14 Bp Gdf-5

**Immunogen:**

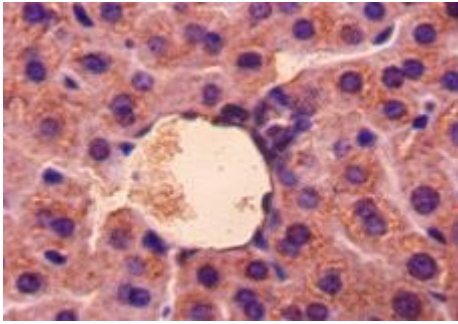
Recombinant Mouse Growth/differentiation factor 5 protein (376-495AA).

**Storage:**

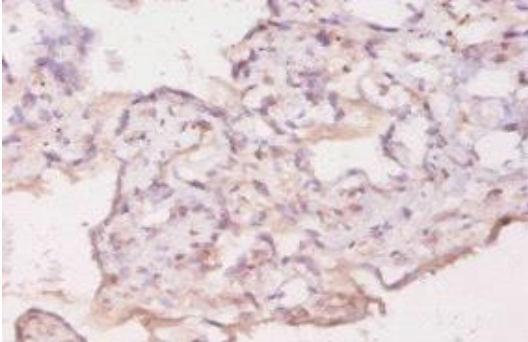
Preservative: 0.03% Proclin 300. Constituents: 50% Glycerol, 0.01M PBS, PH 7.4

## Product Images

---



Immunohistochemistry of paraffin-embedded mouse liver tissue using PACO26937 at dilution of 1:50.



Immunohistochemistry of paraffin-embedded human placenta tissue using PACO26937 at dilution of 1:20.