

Product Information

Size:

50ug

Reactivity:

Human, Mouse

Source:

Rabbit

Isotype:

IgG

Applications:

ELISA, WB, IHC

Recommended dilutions:

ELISA:1:2000-1:10000, WB:1:500-1:2000,
IHC:1:20-1:200

Protein Background:

Plays an important role in growth control. Its major role in stimulating body growth is to stimulate the liver and other tissues to secrete IGF-1. It stimulates both the differentiation and proliferation of myoblasts. It also stimulates amino acid uptake and protein synthesis in muscle and other tissues.

Gene ID:

GH2

Uniprot

P01242

Synonyms:

Growth hormone variant (GH-V) (Growth hormone 2) (Placenta-specific growth hormone), GH2

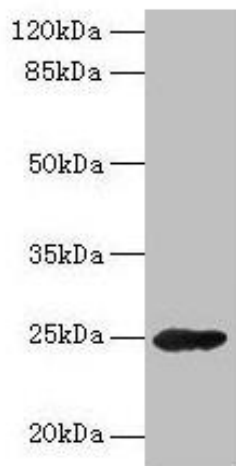
Immunogen:

Recombinant Human Growth hormone variant protein (27-217AA).

Storage:

Preservative: 0.03% Proclin 300. Constituents: 50% Glycerol, 0.01M PBS, PH 7.4

Product Images



Western blot

All lanes: GH2 antibody at 16 μ g/ml + Mouse skeletal muscle tissue

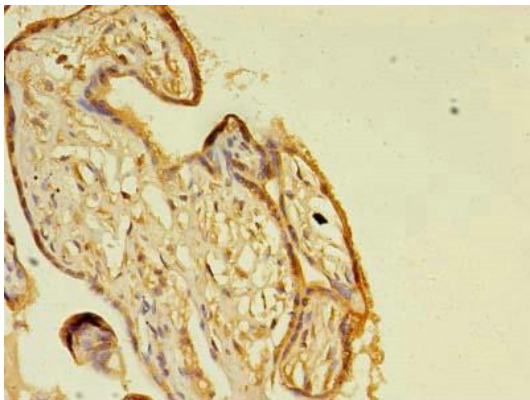
Secondary

Goat polyclonal to rabbit IgG at 1/10000 dilution

Predicted band size: 25, 29, 24, 28 kDa

Observed band size: 25 kDa

.



Immunohistochemistry of paraffin-embedded human placenta tissue using PACO26969 at dilution of 1:100.