

PACO26977

Product Information

Size:

50ug

Reactivity:

Human

Source:

Rabbit

Isotype:

IgG

Applications:

ELISA, IHC

Recommended dilutions:

ELISA:1:2000-1:10000, IHC:1:20-1:200

Protein Background:

Promotes absorption of the essential vitamin cobalamin (Cbl) in the ileum. After interaction with CUBN, the CBLIF-cobalamin complex is internalized via receptor-mediated endocytosis.

Gene ID:

CBLIF

Uniprot

P27352

Synonyms:

Cobalamin binding intrinsic factor (Gastric intrinsic factor) (Intrinsic factor) (IF) (INF), CBLIF, GIF, IFMH

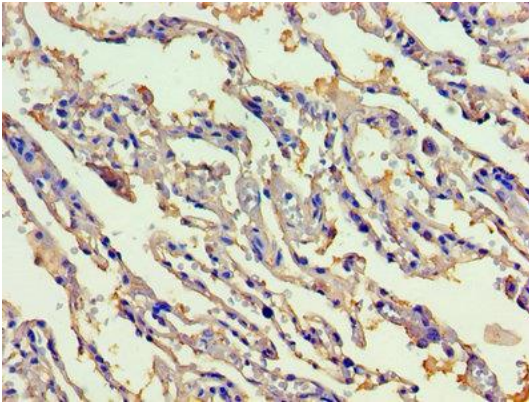
Immunogen:

Recombinant Human Cobalamin binding intrinsic factor protein (19-417AA).

Storage:

Preservative: 0.03% Proclin 300. Constituents: 50% Glycerol, 0.01M PBS, PH 7.4

Product Images



Immunohistochemistry of paraffin-embedded human lung tissue using PACO26977 at dilution of 1:100.