

PACO27113

Product Information

Size:

50ug

Reactivity:

Human

Source:

Rabbit

Isotype:

IgG

Applications:

ELISA, IHC

Recommended dilutions:

ELISA:1:2000-1:10000, IHC:1:20-1:200

Protein Background:

Phosphatidylinositol-4-phosphate-binding protein that may antagonize the action of GOLPH3 which is required for the process of vesicle budding at the Golgi and anterograde transport to the plasma membrane.

Gene ID:

GOLPH3L

Uniprot

Q9H4A5

Synonyms:

Golgi phosphoprotein 3-like (GPP34-related protein), GOLPH3L, GPP34R

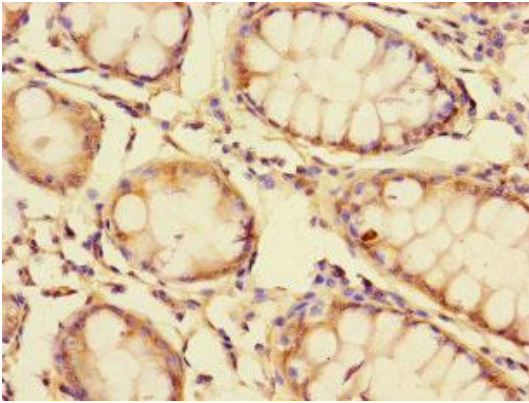
Immunogen:

Recombinant Human Golgi phosphoprotein 3-like protein (6-285AA).

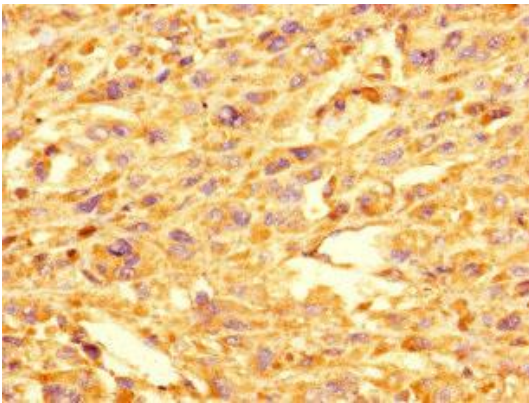
Storage:

Preservative: 0.03% Proclin 300. Constituents: 50% Glycerol, 0.01M PBS, PH 7.4

Product Images



Immunohistochemistry of paraffin-embedded human colon cancer using PACO27113 at dilution of 1:100.



Immunohistochemistry of paraffin-embedded human melanoma using PACO27113 at dilution of 1:100.