

PACO27133

Product Information

Size:

50ug

Reactivity:

Human, Mouse

Source:

Rabbit

Isotype:

IgG

Applications:

ELISA, WB, IHC, IF

Recommended dilutions:

ELISA:1:2000-1:10000, WB:1:500-1:2000,
IHC:1:20-1:200, IF:1:50-1:200

Protein Background:

Cell surface proteoglycan that bears heparan sulfate. May be involved in the development of kidney tubules and of the central nervous system.

Gene ID:

GPC4

Uniprot

O75487

Synonyms:

Glypican-4 (K-glypican) [Cleaved into: Secreted glypican-4], GPC4

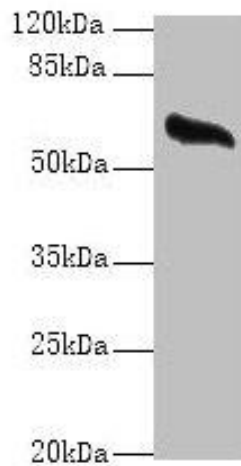
Immunogen:

Recombinant Human Glypican-4 protein (19-210AA).

Storage:

Preservative: 0.03% Proclin 300. Constituents: 50% Glycerol, 0.01M PBS, PH 7.4

Product Images



Western blot

All lanes: GPC4 antibody at 8 μ g/ml + Mouse brain tissue

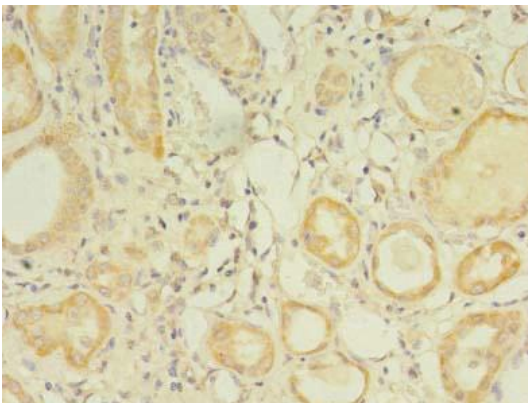
Secondary

Goat polyclonal to rabbit IgG at 1/10000 dilution

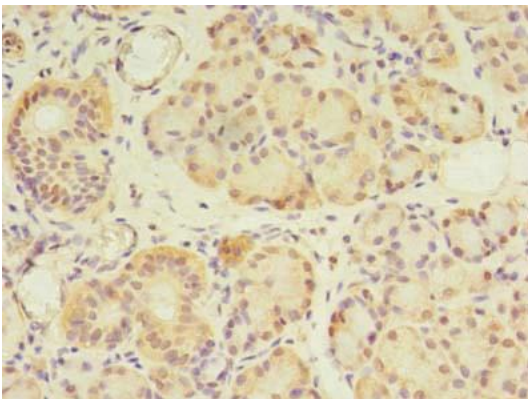
Predicted band size: 63, 55 kDa

Observed band size: 63 kDa

.



Immunohistochemistry of paraffin-embedded human kidney tissue using PACO27133 at dilution of 1:100.



Immunohistochemistry of paraffin-embedded human pancreatic tissue using PACO27133 at dilution of 1:100.