

Product Information

Size:

50ug

Reactivity:

Human, Mouse

Source:

Rabbit

Isotype:

IgG

Applications:

ELISA, WB, IF

Recommended dilutions:

ELISA:1:2000-1:10000, WB:1:500-1:5000,
IF:1:50-1:200

Protein Background:

Involved in neuronal differentiation, including differentiation and migration of neuronal stem cells. Plays a role in neuronal plasticity and is involved in neurite and filopodia outgrowth, filopodia motility and probably synapse formation. GPM6A-induced filopodia formation involves mitogen-activated protein kinase (MAPK) and Src signaling pathways. May be involved in neuronal NGF-dependent Ca(2+) influx. May be involved in regulation of endocytosis and intracellular trafficking of G-protein-coupled receptors (GPCRs); enhances internalization and recycling of mu-type opioid receptor.

Gene ID:

GPM6A

Uniprot

P51674

Synonyms:

Neuronal membrane glycoprotein M6-a (M6a), GPM6A, M6A

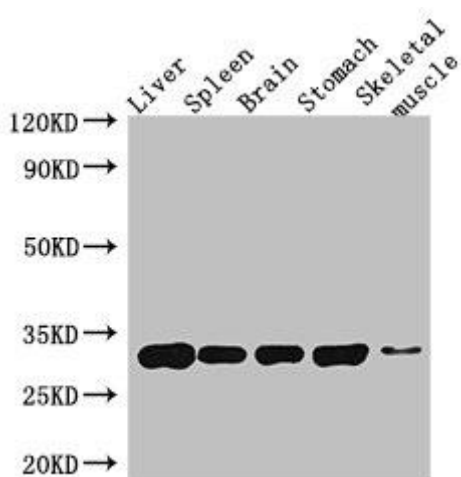
Immunogen:

Recombinant Human Neuronal membrane glycoprotein M6-a protein (149-213AA).

Storage:

Preservative: 0.03% Proclin 300. Constituents: 50% Glycerol, 0.01M PBS, PH 7.4

Product Images



Western Blot

Positive WB detected in: Mouse liver tissue, Mouse spleen tissue, Mouse brain tissue, Mouse stomach tissue, Mouse skeletal muscle tissue

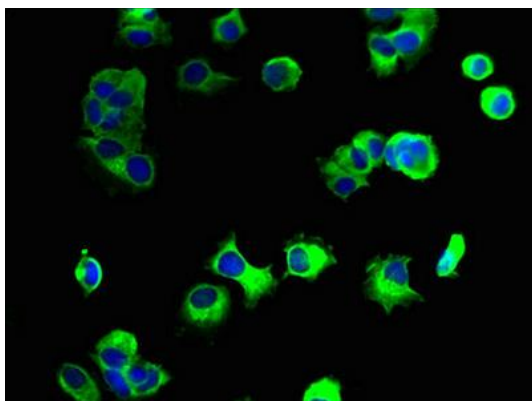
All lanes: GPM6A antibody at 4 μ g/ml

Secondary

Goat polyclonal to rabbit IgG at 1/50000 dilution

Predicted band size: 32, 31, 30 kDa

Observed band size: 32 kDa



Immunofluorescent analysis of MCF-7 cells using PACO27153 at dilution of 1:100 and Alexa Fluor 488-conjugated AffiniPure Goat Anti-Rabbit IgG(H+L).