

PACO27281

Product Information

Size:

50ug

Reactivity:

Mouse, Human

Source:

Rabbit

Isotype:

IgG

Applications:

ELISA, WB

Recommended dilutions:

ELISA:1:2000-1:10000, WB:1:500-1:5000

Protein Background:

Abundant protease in the cytosolic granules of cytotoxic T-cells and NK-cells which activates caspase-independent cell death with morphological features of apoptosis when delivered into the target cell through the immunological synapse. It cleaves after Lys or Arg. Cleaves APEX1 after 'Lys-31' and destroys its oxidative repair activity. Cleaves the nucleosome assembly protein SET after 'Lys-189', which disrupts its nucleosome assembly activity and allows the SET complex to translocate into the nucleus to nick and degrade the DNA.

Gene ID:

Gzma

Uniprot

P11032

Synonyms:

Granzyme A (EC 3.4.21.78) (Autocrine thymic lymphoma granzyme-like serine protease) (CTLA-3) (Fragmentin-1) (T cell-specific serine protease 1) (TSP-1), Gzma, CtlA-3 CtlA3 Mtsp-1

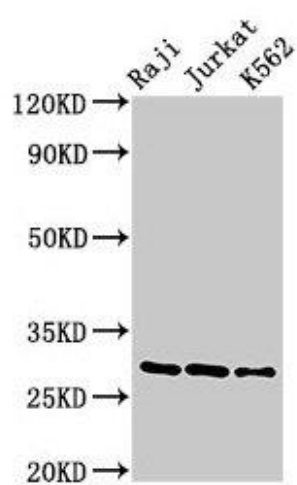
Immunogen:

Recombinant Mouse Granzyme A protein (29-260AA).

Storage:

Preservative: 0.03% Proclin 300. Constituents: 50% Glycerol, 0.01M PBS, PH 7.4

Product Images



Western Blot

Positive WB detected in: Raji whole cell lysate, Jurkat whole cell lysate, K562 whole cell lysate

All lanes: Gzma antibody at 3 μ g/ml

Secondary

Goat polyclonal to rabbit IgG at 1/50000 dilution

Predicted band size: 29 kDa

Observed band size: 29 kDa