

# HSD11B1 Antibody



PACO27457

---

## Product Information

**Size:**

50ug

**Reactivity:**

Human

**Source:**

Rabbit

**Isotype:**

IgG

**Applications:**

ELISA, WB, IHC, IF

**Recommended dilutions:**

ELISA:1:2000-1:10000, WB:1:500-1:5000,  
IHC:1:20-1:200, IF:1:50-1:200

**Protein Background:**

Catalyzes reversibly the conversion of cortisol to the inactive metabolite cortisone. Catalyzes reversibly the conversion of 7-ketocholesterol to 7-beta-hydroxycholesterol. In intact cells, the reaction runs only in one direction, from 7-ketocholesterol to 7-beta-hydroxycholesterol.

**Gene ID:**

HSD11B1

**Uniprot**

P28845

**Synonyms:**

Corticosteroid 11-beta-dehydrogenase isozyme 1 (EC 1.1.1.146) (11-beta-hydroxysteroid dehydrogenase 1) (11-DH) (11-beta-HSD1) (Short chain dehydrogenase/reductase family 26C member 1), HSD11B1, HSD11 HSD11L SDR26C1

**Immunogen:**

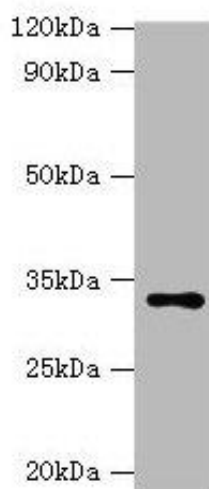
Recombinant Human Corticosteroid 11-beta-dehydrogenase isozyme 1 protein (25-292AA).

**Storage:**

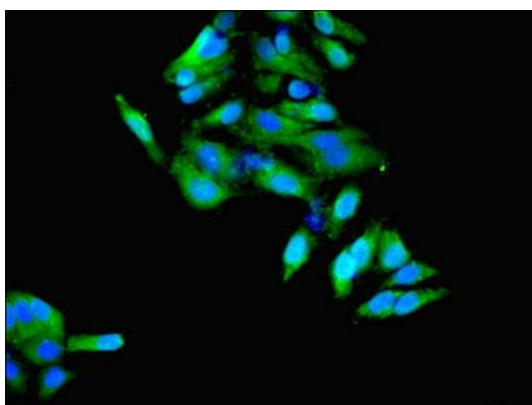
Preservative: 0.03% Proclin 300. Constituents: 50% Glycerol, 0.01M PBS, PH 7.4

## Product Images

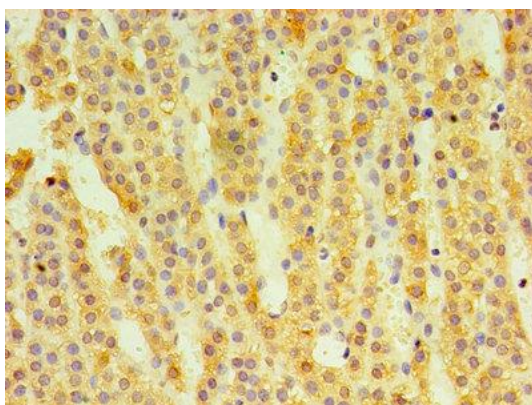
---



Western blot  
All lanes: HSD11B1 antibody at 2 $\mu$ g/ml + Hela whole cell lysate  
Secondary  
Goat polyclonal to rabbit IgG at 1/10000 dilution  
Predicted band size: 33 kDa  
Observed band size: 33 kDa



Immunofluorescent analysis of Hela cells using PACO27457 at dilution of 1:100 and Alexa Fluor 488-conjugated AffiniPure Goat Anti-Rabbit IgG(H+L).



Immunohistochemistry of paraffin-embedded human adrenal gland tissue using PACO27457 at dilution of 1:100.