

# IDO2 Antibody



PACO27497

---

## Product Information

**Size:**

50ug

**Reactivity:**

Human

**Source:**

Rabbit

**Isotype:**

IgG

**Applications:**

ELISA, IHC, IF

**Recommended dilutions:**

ELISA:1:2000-1:10000, IHC:1:20-1:200,  
IF:1:50-1:200

**Protein Background:**

Catalyzes the first and rate-limiting step in the kynurenine pathway of tryptophan catabolism.

**Gene ID:**

IDO2

**Uniprot**

Q6ZQW0

**Synonyms:**

Indoleamine 2,3-dioxygenase 2 (IDO-2) (EC 1.13.11. -) (Indoleamine 2,3-dioxygenase-like protein 1) (Indoleamine-pyrrole 2,3-dioxygenase-like protein 1), IDO2, INDOL1

**Immunogen:**

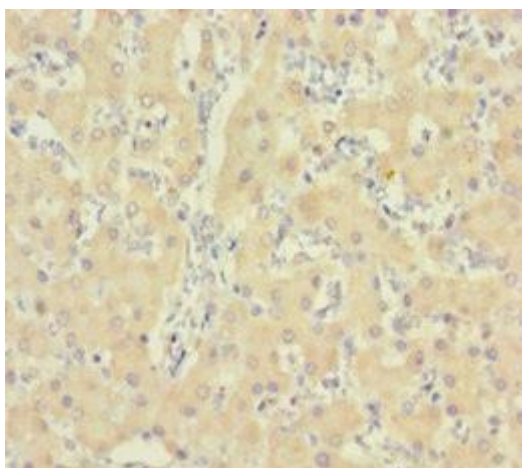
Recombinant Human Indoleamine 2,3-dioxygenase 2 protein (1-407AA).

**Storage:**

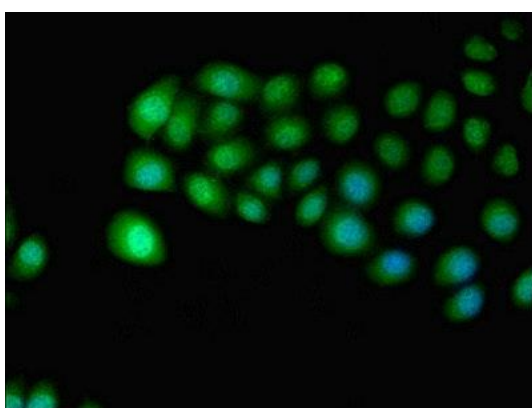
Preservative: 0.03% Proclin 300. Constituents: 50% Glycerol, 0.01M PBS, PH 7.4

## Product Images

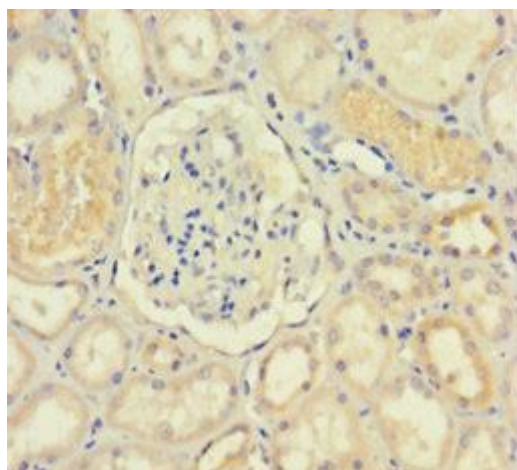
---



Immunohistochemistry of paraffin-embedded human liver tissue using PACO27497 at dilution of 1:100.



Immunofluorescent analysis of A549 cells using PACO27497 at dilution of 1:100 and Alexa Fluor 488-conjugated AffiniPure Goat Anti-Rabbit IgG(H+L).



Immunohistochemistry of paraffin-embedded human kidney tissue using PACO27497 at dilution of 1:100.