

IFRD2 Antibody



PACO27549

Product Information

Size:

50ug

Reactivity:

Human

Source:

Rabbit

Isotype:

IgG

Applications:

ELISA, WB, IHC

Recommended dilutions:

ELISA:1:2000-1:10000, WB:1:500-1:2000,
IHC:1:20-1:200

Protein Background:

nucleus.

Gene ID:

IFRD2

Uniprot

Q12894

Synonyms:

Interferon-related developmental regulator 2 (Protein SKMC15), IFRD2

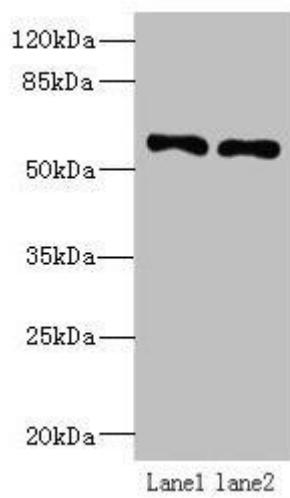
Immunogen:

Recombinant Human Interferon-related developmental regulator 2 protein (1-202AA).

Storage:

Preservative: 0.03% Proclin 300. Constituents: 50% Glycerol, 0.01M PBS, PH 7.4

Product Images



Western blot

All lanes: IFRD2 antibody at 12 μ g/ml

Lane 1: Hela whole cell lysate

Lane 2: PC-3 whole cell lysate

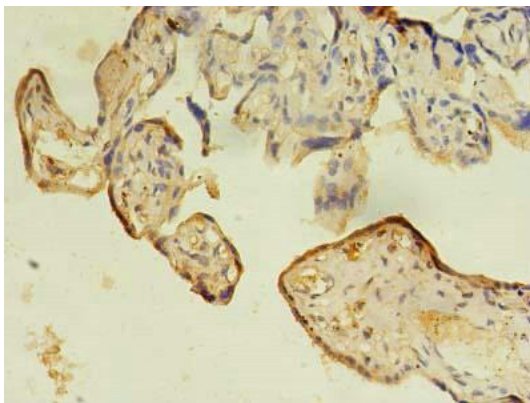
Secondary

Goat polyclonal to rabbit IgG at 1/10000 dilution

Predicted band size: 55, 66 kDa

Observed band size: 55 kDa

.



Immunohistochemistry of paraffin-embedded human placenta tissue using PACO27549 at dilution of 1:100.